

2024 CAROLINAS GCSA



# CONFERENCE & TRADE SHOW



MYRTLE BEACH CONVENTION CENTER  
NOVEMBER 18 – 20, 2024

CONFERENCE PROGRAM

# Green Resource<sup>®</sup>

Fertilizer • Chemicals • Seed • Erosion

# EARLY ORDER PROGRAM

## Triad

5204 Highgreen Court  
Colfax, NC 27235  
(336) 855-6363

## Triangle

1218 Mangement Way  
Garner, NC 27529  
(919) 779-4727

## Coastal

2407 Ocean Hwy, West  
Shalotte, NC 28459  
(910) 363-1230

## Charlotte

10404 Granite Street, Ste K  
Charlotte, NC 28273  
(704) 927-3100

## Winston

191 Budd Blvd  
Winston Salem, NC 27103  
(336) 793-9230

## Ladson

9492 Hamburg Road  
Ladson, SC 29456  
(854) 999-4039



## CALL YOUR GREEN RESOURCE SALES PROFESSIONAL AND SAVE!

AUTHORIZED DISTRIBUTOR • MAXIMIZED SAVINGS IN OCTOBER • EXTENDED PAYMENT TERMS





# 2024 CAROLINAS GCSA



# CONFERENCE & TRADE SHOW

## CONTENTS

President's Message.....	2
Board of Directors.....	3
Executive Director and Staff.....	3
Sheraton Hotel Accommodations.....	3
Summary of Events.....	4
Distinguished Service Award.....	6
Corporate Partners.....	7
Assistant Superintendent Reception.....	8
Blue Ridge Breakfast.....	8
Monday Events.....	9
Golf Championship.....	10
Sporting Clay Event.....	13
Tuesday Events.....	22
Carolinas Night.....	34
Wednesday Events.....	35
27-Hole Challenge.....	39
General Information.....	40
Meet the Speakers.....	41
Pesticide Credits & GCSAA Education Points Chart.....	45
Conference and Show Registration Information/Fees.....	46
Superintendent Image Campaign.....	47

## ADVERTISERS

Green Resource.....	Inside Front
Brandt.....	20
New Life Turf.....	21
JRM Inc.....	Inside Back
John Deere.....	Back Cover



## 2024 CONFERENCE & SHOW COMMITTEE MEMBERS

<b>Brian Green</b>	<i>Lonnie Poole Golf Course at NC State - Chairman</i>
<b>Pete Gerdon</b>	<i>Grandfather Golf &amp; Country Club</i>
<b>Alex Tolbert</b>	<i>Orangeburg Country Club</i>
<b>Don Garrett, Jr., CGCS</b>	<i>The Walker Course at Clemson University</i>
<b>Eric Dusa, CGCS</b>	<i>Marlboro County Parks and Recreation</i>
<b>Jim Huntoon</b>	<i>Horry-Georgetown Technical College</i>
<b>Ashley Sutton</b>	<i>TPC Piper Glen</i>
<b>Travis Gannon, Ph.D.</b>	<i>NC State University</i>
<b>Jim Kerns, Ph.D.</b>	<i>NC State University</i>
<b>Joe Roberts, Ph.D.</b>	<i>Clemson University</i>
<b>Lee Butler</b>	<i>NC State University</i>
<b>Chris Neff</b>	<i>Consulting Agronomist, USGA</i>
<b>Tim Kreger</b>	<i>Executive Director, Carolinas GCSA</i>
<b>Angie Davis</b>	<i>Office Manager, Carolinas GCSA</i>
<b>Melissa Smith</b>	<i>Membership Coordinator, Carolinas GCSA</i>

**#carolinasshow2024**

# A MESSAGE FROM OUR PRESIDENT



I am as honored as I am proud to welcome you to the 2024 Carolinas GCSA Conference and Trade Show. Most of you know I have been in this business for a while now and I can remember when this event was just a shadow of what you will enjoy this week. Let me tell you, those stories about the trade show being squeezed around a hotel pool or in the basement are true.

The fact that our show is now the largest regional event in golf course maintenance outside the national show is testament to some real innovation matched with a lot of hard work – two attributes that people in our industry are well known for, whether they are superintendents or industry partners.

From our golf tournament to our education program and the trade show itself, this week gives us the chance to celebrate at the same time we learn, expand our networks and keep abreast of what's new. And with golf healthier than it has been in a decade or more, we're expecting this show could be our biggest yet.

So, please enjoy your time with us this week. Take as many notes and shake as many hands as you can. Knowledge and friends are two things you can never have enough of. Your career will be better for it, and so will our profession. In a day and time when so much business and interactions are done remotely, getting together face-to-face like this only becomes more valuable.

Thank you for coming. Have a great week.



**Pete Gerdon**  
*President*

**Pete Gerdon**  
President Carolinas GCSA



# BOARD OF DIRECTORS



**Vice-President**  
**William A. Tolbert**  
Orangeburg Country Club  
Orangeburg, SC



**Secretary-Treasurer**  
**Brian C. Green**  
Lonnie Poole Golf Course at  
NC State, Raleigh, NC



**Past President**  
**Chuck J. Connolly**  
Links O'Tryon  
Campobello, SC

## HOTEL ACCOMMODATIONS



### Headquarters Hotel

**Sheraton Myrtle Beach Convention Center Hotel**  
2101 North Oak Street, Myrtle Beach, SC

Our room block dates are from:

**Saturday, November 16th - Thursday, November 21st**

Call **1-888-627-8203** to book your room.

For call in, you may ask for CGCSA Attendees or the group id code CG3.

To reserve your room online, the link is:

<https://www.marriott.com/event-reservations/reservation-link.mi?id=1713285280362&key=GRP&app=resvlink>

**WE HAVE A VERY LARGE ROOM BLOCK SO IF YOU HAVE ISSUES RESERVING YOUR ROOM, PLEASE CALL THE CAROLINAS GCSA OFFICE AND SPEAK WITH ANGIE DAVIS AT 864-843-1150.**

**Room Rate: \$112 per night**

**Parking: \$5 per day**

*The Sheraton MBCC Hotel WILL NOT SOLICIT reservations from past guests. If a third party company reaches out to you presenting themselves to be with the Sheraton, do not give any personal information or a credit card number.*

## DIRECTORS



**Jeremy D. Boone, CGCS**  
Springdale Country Club  
Canton, NC



**Eric Dusa, CGCS**  
Marlboro County Parks & Recreation, Bennettsville, SC



**Daryl P. Ewing**  
Carolina Lakes Golf Club  
Indian Land, SC



**Donald C. Garrett, Jr., CGCS**  
The Walker Course at  
Clemson University  
Clemson, SC



**Matthew Jones, CGCS**  
Forsyth Country Club  
Winston-Salem, NC



**R. Todd Lawrence, CGCS**  
The Country Club at  
Wakefield Plantation  
Raleigh, NC



**Ryan D. McClannon**  
Reynolds Park Golf Club  
Winston-Salem, NC



**Matthew T. Smith**  
Wilmington Golf Course  
Wilmington, NC



**Bradley A. Young**  
Hilton Head National  
Bluffton, SC

## EXECUTIVE DIRECTOR AND STAFF



**Tim Kreger**  
Executive Director



**Angie Davis**  
Office Manager



**Melissa Smith**  
Membership  
Coordinator



**Kim Clark**  
Local Association  
Coordinator



**Trent Bouts**  
Editor  
Carolinas Green





# SUMMARY OF CONFERENCE AND SHOW



## SUNDAY, NOVEMBER 17, 2024

6 – 9 pm Assistant Superintendent Reception RipTydz

## MONDAY, NOVEMBER 18, 2024

7 am	Blue Ridge Breakfast	Mammy's Kitchen
7 am – 4:30 pm	Registration	Hall of Fame
11 am Shotgun Start	Golf Championship	Caledonia Golf & Fish Club, True Blue Golf Club and Wachesaw Plantation Club
11 am	Sporting Clay Event	Back Woods Quail Club, Georgetown, SC
11:30 am – 12:30 pm	Seminar Luncheon	Ballroom DE (Seminar Registrants Only)
4 pm	Golf Reception	Immediately following golf at True Blue Golf Club
6 – 9 pm	Exhibitor Move-In for Large Equipment	Exhibit Hall

### MORNING SEMINARS • 8–11:30 am

1	Advanced Management of Ultradwarf Bermudagrass Golf Greens	Bert McCarty, Ph.D., Joseph A. Roberts, Ph.D.
2	Data-Driven Aeration	Jordan Booth, CGCS, Chris Neff
3	How to Stay Cool when Cool-Season Putting Greens Decline!	Lee Butler, David S. McCall, Ph.D.
4	Fertilizers and Technology!	Grady L. Miller, Ph.D., Qiyu Zhou, Ph.D.
5	You Pick the Pest: Turf Insect Management	Terri Billeisen, Ph.D.
6	Spray Masters: Making the Most Out of All You Apply!	Travis W. Gannon, Ph.D.

### AFTERNOON SEMINARS • 12:30–4 pm

7	Making Herbicides Work or Why They Sometimes Fail?	Travis W. Gannon, Ph.D., Bert McCarty, Ph.D.
8	Autonomous Mowers and Aerial Drones: Current Technology and Future Applications	Scott McElroy, Ph.D., David S. McCall, Ph.D.
9	Troubleshooting and Diagnosing Turf Issues!	Lee Butler, Jim Kerns, Ph.D.
10	Advanced Weed Management for Cool-Season Turfgrasses	Matthew T. Elmore, Ph.D. Fred H. Yelverton, Ph.D.
11	Cool-Season Turfgrass Insects with Emphasis on the Annual Bluegrass Weevil!	Terri Billeisen, Ph.D. Rick L. Brandenburg, Ph.D., Gram Grant

## TUESDAY, NOVEMBER 19, 2024

7 am – 2 pm	Exhibitor Move-In	Exhibit Hall
7 am – 8 pm	Registration Open	Hall of Fame
11:30 am – 12:30 pm	Seminar Luncheon	Ballroom DE (Seminar Registrants Only)
1 pm	Student Turf Bowl Participant Lunch	Ballroom E
2 – 4 pm	Carolinas GCSA Student Chapter Turf Bowl	Ballroom D
4 – 4:30 pm	Student Question and Answer with Assistant Superintendents/Job Fair	(immediately following Turf Bowl) Aquatrols booth # 1601
3:30 – 7 pm	Trade Show Open	Exhibit Hall
4 – 8 pm	Carolinas Night	Exhibit Hall
7 – 8 pm	Women in Turf	Vereens booth # 2212

## MORNING SEMINARS • 8–11:30 am

12	<b>Ultimate Weed Control Guide!</b>	Moderator: Bert McCarty, Ph.D. Panelists: Matthew T. Elmore, Ph.D., J. Scott McElroy, Ph.D., Travis W. Gannon, Ph.D. Fred H. Yelverton, Ph.D.
13	<b>P's of Fertilization: Phosphorus, Phosphite and Why They Do Different Things for You!</b>	Beth A. Guertal, Ph.D.
14	<b>How to Best Utilize Your Assistant for His/Her Growth!</b>	John "Billy" Bagwell, Chris Neff
15	<b>Current Trends in Research &amp; Innovations from USGA - Data Collection</b>	Cole Thompson, Ph.D., W. Brian Powell, CGCS Wesley Stewart, M.S.
16	<b>Being an Effective Superintendent.... It's Not All About Growing Grass</b>	Don Garrett, CGCS, Dave Dettmer, CGCS Jim Huntoon, Associate Professor
17	<b>Getting to the Root of Managing Soilborne Diseases : Warm- Season Turfgrass</b>	Jim Kerns, Ph.D., Joseph A. Roberts, Ph.D.
18	<b>Aging Putting Green, Root Zone &amp; Management of Organic Matter</b>	Roch E. Gaussoin, Ph.D., Jim Murphy, Ph.D.
19	<b>Ready, Set.....Grow!</b>	John P. Cunningham, CGCS Jodie J. Cunningham, SPHR, SHRM-SCP
20	<b>Aquatic Plant Management: An Introduction to Keeping Your Ponds Free of Unsightly Plants and Algae</b>	Matthew Cutulle, Ph.D. Rob Richardson, Ph.D.
21	<b>Managing Cool-Season Grasses in Hot Environments!</b>	Mike D. Richardson, Ph.D.

## AFTERNOON SEMINARS • 12:30–4 pm

22	<b>Physical and Chemical Soil Properties</b>	Beth Guertal, Ph.D.
23	<b>The Architecture of a Successful Renovation</b>	Sam Duinick, Nick Mazzella, Chris Neff, Nick Roth Tyler J. Rae
24	<b>Nematodes: Past, Present, and Future Directions for Management of these Elusive Pests!</b>	David S. McCall, Ph.D., Joseph A. Roberts, Ph.D.
25	<b>Successful Bentgrass Management on Greens and Fairways!</b>	Jim Murphy, Ph.D., Matthew T. Elmore, Ph.D.
26	<b>It's About Tines!</b>	Roch E. Gaussoin, Ph.D.
27	<b>The Art of Effective Delegation and Communication</b>	Jodie J. Cunningham, SPHR, SHRM-SCP
28	<b>Self-Awareness and Relationship Building - A Deep Dive!</b>	John P. Cunningham, CGCS
29	<b>Wetting Agents: What They Are, What They're Not, and How to Get the Most Out of Them!</b>	Mike D. Richardson, Ph.D.
30	<b>Goosegrass, Doveweed, Torpedograss and Other Growing Weed Problems!</b>	J. Scott McElroy, Ph.D., Travis W. Gannon, Ph.D.
31	<b>Everything You Need to Know About Ultradwarf Bermudagrass!</b>	Moderator: David Lee, Lance B. Allen, Brad Edens, Jeff R. Mack, Mark W. Mitchell

## WEDNESDAY, NOVEMBER 20, 2024

7 am - 2 pm	Registration	Hall of Fame
7 - 8 am	Fellowship Breakfast	Ballroom D
8 - 11 am	General Education Session	Ballroom E
11 - 11:15 am	DSA Presentation	Ballroom E
11:15 - 11:30 am	Annual Business Meeting	Ballroom E
11:30 am - 2:30 pm	Trade Show Open	Exhibit Hall
2 pm	27-Hole Challenge Prize Giveaway	Exhibit Hall
2:30 - 8 pm	Exhibitor Tear Down	Exhibit Hall
6 pm	Distinguished Service Award Dinner	By invitation only, Grand Dunes Ocean Club

\*All seminar locations will be displayed in the registration area.

# DISTINGUISHED SERVICE AWARD 2024 CHUCK GREEN



A lot of highly regarded people had some wonderful things to say about Chuck Green when they were campaigning for him to receive the Carolinas GCSA Distinguished Service Award. But few said as much and so succinctly as Dr. Bert McCarty, himself a past winner of the award.

“Chuck is one of the most intelligent and inquisitive superintendents I’ve had the pleasure to work with. He is constantly contemplating a better, more efficient way of doing things,” McCarty wrote in his letter of recommendation, one of a staggering 36 submitted on Green’s behalf.

That’s a bit like Einstein praising someone for being good at math. It carries some weight. Because McCarty knows about golf course superintendents, having worked with hundreds, if not thousands, throughout his own stellar career.

Then you consider some of the other names who supported Green’s nomination and, well, how could the award be anything other than a *fait accompli*? Among them were six DSA winners, six past presidents, golf association leaders, golf course architects, golf professionals, former employees and industry partners.

That should tell you that Green’s influence over his 40-year career hasn’t just been profound, it has been felt industry-wide. Pretty remarkable for a man who never worked a job outside a two-hour drive. In an earlier time, you could quite reasonably – and safely – hitchhike between Florence Country Club, Columbia Country Club, Sage Valley Golf Club and Quixote Club – in the same day!

But no one would ever accuse Green of being a passenger. On the contrary, he has been in the driver’s seat in many ways over many years. In the ‘80s, he introduced bentgrass at Florence. In 2000, he helped build Sage Valley, among the highest ranked courses in the country. In 2019, he was the first person hired for the \$13-million reinvention of ailing Sunset Country Club that became Quixote Club.

That’s just on the golf course. Remember what McCarty said about Green “constantly contemplating a better, more efficient way” of doing things?



Off the course, he helped convince Clemson University to take the focus of a young Dr. Bruce Martin away from commercial crops and let him become a turfgrass man. Then for decades, he collaborated with Martin and others, McCarty included, providing research plots, trialing programs and products, and delivering real world feedback.

As a Carolinas GCSA director in the ‘90s and president in 1997, he helped lay the groundwork for the Carolinas GCSA that more than 1,800 members enjoy today. He was, as past president Jeff Connell, now at Fort Jackson Golf Club, says, “...part of a special generation of men who wanted to professionalize the association.”

Green helped lead the transition from a part-time executive director to full-time. He helped move what was formerly more of a get-together than a conference to Myrtle Beach. He solicited the support from industry partners and members necessary to transform the golf championship – which he won in 1994 – into a showpiece event.

Along the way, he trained new generations of golf course superintendents. Some, like Connell, as his employees. And countless others like Rhett Baker, now at Ohoopie Match Club in Georgia, as peers. Baker was “a newbie superintendent” at Palmetto Golf Club in Aiken when Green was building Sage Valley nearby.

“I got to see firsthand how his success has lasted for so many years ...” Baker wrote in support of Green’s nomination. “I was able to understand the network of relationships that he relies on and the assets available to all Carolinas members, that he had a role in building ... He has been a great sounding board and positive influence in my success as a golf course superintendent.”

Today, at 67, Green is at an age where many are looking to put their feet up. But his passion for the work and the people in it remains as palpable as ever. He just loves it, simple as that.

And chances are, given how closely he wears his heart on his sleeve, we’ll see ample evidence of that when he accepts the Distinguished Service Award, the Carolinas GCSA’s highest honor, on November 20.



# 2024 CAROLINAS GCSA CONFERENCE AND SHOW CORPORATE PARTNERS

MONDAY GOLF CHAMPIONSHIP	 	WEDNESDAY FELLOWSHIP BREAKFAST	 	27-HOLE CHALLENGE	  	
GOLF RECEPTION	CLOSEST TO HOLE IN ONE CONTEST		STUDENT TURF BOWL		CAROLINAS NIGHT	  
	CLOSEST TO THE PIN		DSA DINNER	 		 
	LONGEST DRIVE		WELCOMING			WEDNESDAY LUNCHEON
SEMINAR EDUCATION		ON SITE COMM.		REGISTRATION		
SPORTING CLAY EVENT	 	TURF BOWL LUNCH		ASST. SUPT. RECEPTION	 	
WOMEN IN TURF		SKIN CANCER SCREENINGS	 	SOCIAL MEDIA		
MONDAY AND TUESDAY SEMINAR LUNCHEON	 	GRAND PRIZE 27 HOLE CHALLENGE		MBCC PARKING SPONSOR	   	
		SEMINAR REFRESHMENT BREAKS		DEACON GSS		
TECHNOLOGY STATION	 	WEDNESDAY GENERAL SESSION		E-NEWSLETTER		
	 	A STEP AHEAD				

# ASSISTANT SUPERINTENDENT RECEPTION

SUNDAY, NOVEMBER 17

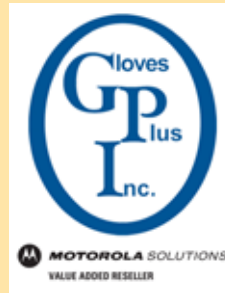
6 - 9 pm

RIPTYDZ OCEANFRONT GRILL & ROOFTOP BAR

1210 N Ocean Blvd  
Myrtle Beach, SC

*Complimentary: Please register to attend for planning purposes.*

In Partnership with



## BLUE RIDGE BREAKFAST

MONDAY, NOVEMBER 18

7 - 10 am

MAMMY'S KITCHEN

1010 NORTH KINGS HWY., MYRTLE BEACH, SC  
*(Located right next to the Old Pavilion Parking Deck)*

**FREE and OPEN TO ALL CONFERENCE AND SHOW ATTENDEES!!!! NOT JUST BLUE RIDGE MEMBERS!!!!**



Sponsored by  
Tom Porter - J.K. Morro



# MONDAY GENERAL ACTIVITIES

## MONDAY, NOVEMBER 18, 2024

7 am - 4:30 pm	<b>Conference &amp; Show Registration</b>	Myrtle Beach Convention Center Hall of Fame
8 am - 4 pm	<b>Seminars</b>	
11 am	<b>Sporting Clay Event</b>	Backwoods Quail Club, Georgetown, SC
11 am	<b>Golf Championship</b>	Caledonia Golf & Fish Club True Blue Golf Club Wachesaw Plantation Club
11:30 am - 12:30 pm	<b>Seminar Luncheon</b> <b>MENU</b> <b>A Taste of Italy Buffet</b> Classic Caesar Salad with Parmesan Herb Croutons Italian Pasta Salad Meatballs Pomodoro Meat Lasagna Garlic Bread Lemon Bars Iced Water and Tea Station	Ballroom DE (Seminar Registrants Only)  Lunch is included with two half-day seminars on Monday  In Partnership with <div style="display: flex; justify-content: space-around; align-items: center;">    </div> <div style="display: flex; justify-content: space-around; align-items: center; margin-top: 20px;">   </div>
Immediately following golf	<b>Golf Reception</b>	True Blue Golf Club
6 pm	<b>Exhibitor Move-In for Large Equipment</b>	<ul style="list-style-type: none"> <li>▪ Water Station in luncheon area of trade show floor</li> <li>▪ Sodas can be purchased on Level 2 of the Convention Center, right off escalator near restrooms</li> </ul>





# GOLF CHAMPIONSHIP INFORMATION

## MONDAY, NOVEMBER 18, 2024



### Caledonia Golf & Fish Club

Since opening to the public in January 1994, Caledonia Golf and Fish Club has rapidly gained a reputation as one of the premier courses in America. It is the first solo design of late, great golf course architect Mike Strantz. Strantz approached his assignments in a unique way—as an artist, rather than an engineer. His exceptionally creative eye is reflected in the way he sculpted Caledonia’s 18 holes, with large, creative greens guarded at times by ponds, streams and imposing bunkers. The same sort of majestic live oak that overhangs the entryway into Caledonia similarly frames many of the shots at Caledonia, giving the course a rustic feel. Thousands of annual and semiannual flowers bloom every year throughout the property, further adding to the beauty of the experience. A round of golf at Caledonia has been described as a “beautiful day in a floral nature park.”

**Host: Jackson E. Clemons, Jr.**  
*Director of Agronomy*



### True Blue Golf Club

True Blue Golf Club is annually ranked in Major Golf Publications like Golf Magazine, Golfweek and other “Top 100 Lists” True Blue Golf Club represents the class of the expansive golf offerings on The Waccamaw Golf Trail located just minutes south of central Myrtle Beach in Pawleys Island. The dramatic, fun layout is known for its vast fairways, undulating greens and impressive elevation changes. The rolling terrain and native vegetation of this “Nationally Recognized” Mike Strantz design makes for one of the most spectacular settings in golf. And with an 18-acre practice facility, fully-stocked pro shop and inviting grill room, True Blue Golf Club is a must-play on any visit to “The Golf Capital of the World” Myrtle Beach, South Carolina. All are welcome here!

**Host: Kevin Thompkins,**  
*Golf Course Superintendent*



### Wachesaw Plantation Club

Wachesaw was crafted by internationally acclaimed Tom Fazio, Wachesaw was designed to take advantage of the site’s inherent beauty and interesting elevation changes not typically found in the Carolina Low Country. The unexpected rolling fairways are thoughtfully designed to weave through the giant oaks strategically placed on the course. This unique setup provides golfers of varying skill a memorable and challenging, yet enjoyable experience.

Come experience the pace of play and privileges that can only be offered at a true private club. “Our goal is to provide Members and their Guests an unparalleled experience through a commitment to gracious hospitality and exemplary service. New members will quickly achieve a sense of belonging due to the atmosphere the staff has created.”

**Host: Scott Fretz**  
*Golf Course Superintendent*



# GOLF CHAMPIONSHIP INFORMATION

## MONDAY, NOVEMBER 18, 2024

In Partnership with



### Golf Schedule

#### 10 - 11 am CHECK- IN

All golfers must check in at the Carolinas GCSA Registration Desk at assigned course prior to the shotgun start.

#### 11 am SHOTGUN START

#### 4 - 6 pm RECEPTION

Reception immediately following golf at the clubhouse at True Blue Golf Club

#### COURSE ASSIGNMENTS

All course assignments will be determined one week prior to the event. Course assignments will be posted on the home page of the website, [www.carolinasgcsa.org](http://www.carolinasgcsa.org) and emailed on November 13, 2024.

**Tee Gift** - Each participant will receive a Toro Beach Towel



#### Championship Flight A & B - Medal Play Tournament

- 1st, 2nd, 3rd place Gross & Net
- Overall Gross
- Carolinas GCSA Superintendent Member Champion (Class A, B and C eligible)
- Overall Gross Carolinas GCSA Affiliate Member Champion  
*(Limited to first 100 entries for purpose of flighting and speed of play)*

#### Senior Division (age 50 and up) - Medal Play Only

- 1st Place Gross & Net
- Will play in senior flight from senior tees

#### Four Ball Flights A & B

- 1st, 2nd, 3rd Place Gross & Net
- Two Person Team Event
- Number of flights based on number of entries  
*(Limited to first 50 team entries)*

#### Captain's Choice Flights A & B

- 1st Place Gross & Net
- Four Person Captain's Choice Team Event  
*(Limited to first 75 paired entries)*

#### Long Drive:

Apple Watch 1 per course  
Series 6 GPS Model



**Closest to the Pin:**  
DJI Mini 2 Drone



#### Hole in One

- Club Car Carryall 502 utility vehicle, 1 per course  
Designated to winning individuals home course/club
- Class A, AA, B & C Members Eligible



# GOLF CHAMPIONSHIP GENERAL RULES



## ELIGIBILITY

Players must be registered to attend or participate in the Carolinas Golf Course Superintendents Conference & Show. Superintendents and affiliates will play in mixed foursomes. Contestants will select to play in Medal Play, Senior Medal Play, Four Ball\*, or Captain's Choice\*\* Division.

*\*Four Ball teams sign up with one partner on registration form. If you would like to play in four ball, and do not have a partner, the Carolinas GCSA will assign a partner.*

*\*\*Captain's Choice teams may sign up with ONE partner on the registration form. If you would like to play Captain's Choice, you do NOT have to sign up with a partner, this is just an option.*

## TOURNAMENT FORMATS

### MEDAL PLAY

- This is a stroke play individual 18-hole golf event.
- Each contestant will play his or her own ball out on each hole and report their score.
- There will be two flights divided by handicap once field is set.

### SENIOR MEDAL PLAY

This is identical to the Medal Play with these exceptions: Only contestants over age 50 are eligible; Only 1st place gross and net will be awarded in this flight; Senior players will play from forward tees except on holes designated for long drive and closest to the pin contests.

### FOUR BALL

- This is a two person team event.
- Both players will complete the hole and then select the better of their scores to report for their score on each of the 18 holes.
- There will be two flights divided by combined team handicap once field is set.
- Each team will play alongside another team selected by the Carolinas GCSA.

### CAPTAIN'S CHOICE

- This is a four person team event.
- Two contestants will be allowed to register together, and your other two players will be paired with you by the Carolinas GCSA.
- All four players will execute their desired shot from the teeing ground, then select the best respective shot, and repeat that process until the ball is holed.
- Only one team score per hole will be counted.
- There will be two flights divided by combined team handicap once field is set.

**LOCATION:** The tournament will be played at Caledonia Golf and Fish Club, True Blue Golf Club and Wachesaw Plantation Club.

**ENTRY DEADLINE:** First 300 players will be accepted. No entries will be accepted after the first 300 players or **October 31, 2024**, no exceptions.

**CANCELLATION POLICY:** The Carolinas GCSA must be notified of any cancellations by Monday, **November 11, 2024** in order to receive a refund.

## GOLF CHAMPIONSHIP COMMITTEE

Daryl Ewing, Chair, Carolina Lakes Golf Club, Indian Land SC  
Eric Dusa, CGCS, Marlboro County Parks & Recreation, Cheraw, SC  
Jeremy Boone, CGCS, Springdale, Canton, NC

Any questions should be directed to Tim Kreger, Executive Director, Carolinas GCSA at 800-476-4272.



# SPORTING CLAY EVENT

## MONDAY, NOVEMBER 18, 2024

In Partnership with



### SPORTING CLAY SCHEDULE

#### IMPORTANT: NOTE TIME CHANGE

- 10 - 11 am ..... REGISTRATION/CHECK IN
- 11 am - 12 pm .. LUNCH
- 12 - 2 pm ..... SHOOT
- 2 - 2:30 pm ..... Awards & Prizes

#### LUNCH MENU

- Pileau (Chicken Bog)
- Green Beans
- Coleslaw
- Dessert
- Tea



Adam Cribbett, James Duke, Justin Watts and Alex Berry were the top shooters at the 2023 annual Sporting Clay Championship presented in partnership with Carolina Fresh Farms, Envu and Harrell's



#### REGISTRATION FEE

##### Member Pricing

- Early Bird \$75 (Prior to October 1)
- Advanced \$100 (October 1 - October 31)
- Standard \$115 (After October 31)

##### Non-member Pricing

- Early Bird \$105 (Prior to October 1)
- Advanced \$130 (October 1 - October 31)
- Standard \$145 (After October 31)

Includes 100 target sporting clay event; lunch and prizes. Pre-registration is required. Limited to 70 shooters. Please provide a partner name as pairings will be assigned in advance.

#### ENTRY DEADLINE

Pre-registrations must be received by Thursday, October 31, 2024.

#### CANCELLATION POLICY

The Carolinas GCSA must be notified of any cancellations by Monday, November 11, 2024 in order to receive a refund.

#### ELIGIBILITY

Shooters must be registered to attend or participate in the Carolinas Golf Course Superintendents Association Conference & Show.

#### LOCATION

Back Woods Quail Club, 647 Hemmingway Lane, Georgetown, SC

Located just off SC 51 south at the intersection of SC 24 and SC 41/51, Georgetown, SC (Approximately 1 hour from the Myrtle Beach Convention Center).

#### GENERAL RULES

Shooters must provide their own ammunition and hearing and eye protection (standard ear plugs and safety glasses). Ammunition, hearing and eye protection are available for purchase at the gun club. For safety reasons, no shot larger than 7 ½ can be used at the gun club (for example #1, #2, #3, #4, #5, and #6 are NOT allowed). Back Woods Quail Club will provide gun rental for those who need one.

# SEMINAR LINE-UP IN DEPTH

MONDAY, NOVEMBER 18, 2024 • 8-11:30 am



## 1

### Advanced Management of Ultradwarf Bermudagrass Golf Greens



**Bert McCarty, Ph.D.**  
*Professor of Turfgrass Science  
Clemson University*



**Joseph A. Roberts, Ph.D.**  
*Assistant Professor and Extension Specialist of Turfgrass Pathology  
Clemson University*

The conversion by many golf courses to ultradwarf bermudagrass cultivars for golf greens means creating a completely new plan for successful management while also considering the diseases and nematode infection and infestations factors that can significantly limit success. Attendees will walk away with a better understanding of the agronomic and physiological management needs of ultradwarf bermudagrass and how to identify potentially devastating root and crown diseases and nematode problems. Topics discussed include: Construction and cultivar considerations, sunlight requirements, fertility programs, thatch/mat/OM management options, watering strategies, providing winter color plus spring transition trends, preventing winter damage, diseases of importance, nematode diagnostic guidelines, disease and nematode management strategies, and holistic case studies at various budgeted courses.



**GCSAA Ed Points: .35**



**PESTICIDE CREDITS**  
SC-3.5 hrs. NC-2 hrs. GA-3 hrs.

## 2

### Data-Driven Aeration



**Jordan Booth, CGCS, Ph.D.**  
*Senior Director, Course Consulting Service  
USGA Green Section*



**Chris Neff**  
*Consulting Agronomist  
USGA Green Section*

If you aren't seeing the expected results with your aeration program, it might be more than tine size or timing. Perhaps rethinking how you approach cultivation and topdressing is needed.

- Pulling a core twice per year does not have the effect that the industry once thought.
- Odd weather patterns in spring and fall have superintendents searching for the best cultivation technique with the least amount of effect on play.
- There are a lot of tools available to remove and dilute thatch, and infuse sand into the profile.
- To confirm your aeration changes, or determine if one is needed, OM sampling will establish baseline numbers and track changes.



**GCSAA Ed Points: .35**



**PESTICIDE CREDITS**  
SC-0 hrs. NC-0 hrs. GA-0 hrs.

## 3 How to Stay Cool when Cool-Season Putting Greens Decline!



**Lee Butler**

*Extension Coordinator of Entomology and Plant Pathology  
NC State University*



**David S. McCall, Ph.D.**

*Associate Professor, Turfgrass Pathology  
Virginia Tech*

This seminar will focus on the identification and management of diseases and abiotic disorders that affect cool season turfgrass putting greens on golf courses in the Carolinas. The presenters will cover the major pathogens (fungi and nematodes) that cause these diseases. Attendees will learn when they are most likely to occur through monitoring weather data to precisely time preventative pesticide applications. In addition, attendees will learn how to approach long-term management using integrated pest management strategies and fungicide programming to ensure phenomenal control while mitigating the development of fungicide resistance. This seminar will also cover common abiotic issues that typically occur during stressful summer periods and how to differentiate them from actual diseases.



**GCSAA Ed Points: .35**



**PESTICIDE CREDITS**  
SC-3.5 hrs. NC- 3.5 hrs. GA-3 hrs.

## 4 Fertilizers and Technology!



**Grady L. Miller, Ph.D.**

*Professor and Extension Specialist  
Turfgrass Science  
NC State University*



**Qiyu Zhou, Ph.D.**

*Assistant Professor, Turfgrass  
Management  
NC State University*

What's new and emerging in the fertilizer market? This talk will cover it all - from foliar application to nitrification inhibitors, and everything else. We will talk about what to best use if you are watching your budget, or what are best selections in environmentally sensitive areas. From N to Zn - we will talk about fertilizers.



**GCSAA Ed Points: .35**



**PESTICIDE CREDITS**  
SC-0 hrs. NC-0 hrs. GA-0 hrs.



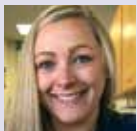
# SEMINAR LINE-UP IN DEPTH

MONDAY, NOVEMBER 18, 2024 • 8-11:30 am



## 5

### You Pick the Pest: Turf Insect Management



**Terri Billeisen, Ph.D.**

*Extension Associate, Department of Entomology and Plant Pathology  
NC State University*

In You Pick the Pests, attendees vote on the top insect pests and priority areas. This seminar will address the top selected turfgrass insects and review biology, monitoring and management for each. Particular focus will be given to successful management approaches for cost-effective and environmentally-sound control. We will also review life cycle stages and how you can influence product selection and application timing.



**GCSAA Ed Points: .35**



**PESTICIDE CREDITS**

SC- 3.5 hrs. NC- 3.5 hrs. GA - 3 hrs.

## 6

### Spray Masters: Making the Most Out of All You Apply!



**Travis W. Gannon, Ph.D.**

*Associate Professor of Crop Science  
NC State University*

Applications of plant protectants through turfgrass sprayers are an integral component of golf course management programs, and considerable time and energy is invested in product selection with regard to safety, efficacy, and turfgrass tolerance. However, it is also important to consider the effects of product formulation and mode of action as well as application factors such as nozzle selection, spray volume, and water quality. This session will cover the fundamentals behind improving product performance by extracting important information from product labels, considering nozzle selection and spray volume, and testing the pH and water quality of the spray solution. Each of these factors can play an important role in success, particularly in areas where superintendents rely on poor-quality ground water and/or reclaimed water.



**GCSAA Ed Points: .35**



**PESTICIDE CREDITS**

SC- 3.5 hrs. NC- 3.5 hrs. GA - 3 hrs.

# SEMINAR LINE-UP IN DEPTH

MONDAY, NOVEMBER 18, 2024 • 12:30–4 pm

## 7

### Making Herbicides Work or Why They Sometimes Fail?



**Travis W. Gannon, Ph.D.**  
*Associate Professor of Crop Science  
NC State University*



**Bert McCarty, Ph.D.**  
*Professor of Turfgrass Science  
Clemson University*

As professionals, we are constantly asked why herbicides do not work to the level expected. Many times, human error is involved in terms of misapplication timing, application method, not understanding how a particular is designed to work, or using the wrong product(s). We will cover PRE and POST emergence products, how they are supposed to work, and understand reasons why they might not work as expected. We will also cover herbicide resistance, its occurrence, and what measures can be taken to avoid or manage existing resistant weed biotypes. Numerous examples will be covered of all topics with time for questions and in-depth discussions.



**GCSAA Ed Points: .35**



**PESTICIDE CREDITS**  
SC-3.5 hrs. NC - 3.5 hrs. GA - 3 hrs.

## 8

### Autonomous Mowers and Aerial Drones: Current Technology and Future Applications



**J. Scott McElroy, Ph.D.**  
*Professor, Weed Science/Turf  
Auburn University*



**David S. McCall, Ph.D.**  
*Associate Professor  
Turfgrass Pathology  
Virginia Tech*

Autonomation and robotics are the future of golf course and turfgrass management and 2023 was the year that technology hit a point where deployment on large scales is possible. With advanced GPS and RTK systems, superintendents can now begin to transition to autonomous technology. The application of drones for real-time sensing and pesticide applications along with autonomous mowers will completely change the way courses are managed over the next decade. This seminar will provide attendees with the necessary information to begin this technological transition.



**GCSAA Ed Points: .35**



**PESTICIDE CREDITS**  
SC-0 hrs. NC-0 hrs. GA-0 hrs.

# SEMINAR LINE-UP IN DEPTH

MONDAY, NOVEMBER 18, 2024 • 12:30–4 pm



## 9 Troubleshooting and Diagnosing Turf Issues!



**Lee Butler**

*Extension Coordinator of Entomology and Plant Pathology  
NC State University*



**Jim Kerns, Ph.D.**

*Professor and Extension Specialist of Turfgrass Pathology  
NC State University*

When turf starts to decline, prompt and accurate problem diagnosis can make the difference between a minor problem and major damage. This seminar will review the tools and services that are available to assist golf course superintendents in problem diagnosis, with emphasis on fungal diseases, nematodes, nutritional problems, abiotic disorders, and chemical injury. Case studies of real-world problems will be analyzed to provide experience in using the tools and services available. Attendees will learn how to implement the troubleshooting method for problem solving and differentiate between abiotic and biotic causes of turfgrass decline.

Attendees will learn how to utilize the tools and resources available for diagnosing the causes of turfgrass decline and interpret reports from plant, soil, tissue, and nematode analysis laboratories. Finally, attendees will learn how to comprehend the art and science of turfgrass disease diagnosis. Without knowledge of problem diagnosis, turfgrass managers will continually struggle with the development of successful pest management strategies.



**GCSAA Ed Points: .35**



**PESTICIDE CREDITS**  
SC-3.5 hrs. NC-3.5 hrs. GA-3 hrs.

## 10 Advanced Weed Management for Cool-Season Turfgrasses



**Matthew T. Elmore, Ph.D.**

*Associate Extension Specialist  
Rutgers University*



**Fred H. Yelverton, Ph.D.**

*Emeritus Extension Specialist  
NC State University*

This seminar will detail weed management strategies for cool-season turf in the Carolinas. Weed control in creeping bentgrass greens will be discussed with an emphasis on *Poa Annua*, Goosegrass, and Crabgrass. Also included will be weed management in cool-season fairways, tees, roughs, etc. Weed management with new herbicides will be included as well as new uses of older herbicides. New and emerging weed problems will also be discussed.



**GCSAA Ed Points: .35**

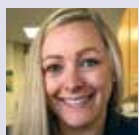


**PESTICIDE CREDITS**  
SC-3.5 hrs. NC- 3.5 hrs. GA-3 hrs.



# 11

## Cool-Season Turfgrass Insects with Emphasis on the Annual Bluegrass Weevil!



### Terri Billeisen, Ph.D.

Extension Associate, Department of Entomology and Plant Pathology  
NC State University



### Rick L. Brandenburg, Ph.D.

Department of Entomology and Plant Pathology  
NC State University

### Gram Grant

Graduate Student, Entomology - Billeisen Lab  
NC State University

This talk will focus on reviewing the biology and ecology of common cool season turf insect pests such as white grubs and cutworms. We will cover the latest management approaches for cost-effective and environmentally - sound control for these insects and examine how environmental conditions can impact product efficacy.

Particular focus will be given to the annual bluegrass weevil and how its life cycle can influence application product selection and timing. We will review recommendations for annual bluegrass weevil management in the southeast and explain how they differ from other regions in the US.



**GCSAA Ed Points: .35**



**PESTICIDE CREDITS**  
SC-3.5 hrs. NC- 3.5 hrs. GA-3 hrs.



## Seminar Attendee Refreshment Breaks

- Water Stations available outside meeting rooms
- 7:30-8:30 am  
Coffee in Hall of Fame
- 9-10 am  
Sodas in Hall of Fame
- 1:30-2:30 pm  
Sodas in Hall of Fame



# Transform your Turf with GRIGG Rezadone: The Ultimate Thatch and Black Layer Solution

GRIGG Rezadone leverages advanced, patent-pending microbe technology to optimize environmental conditions for microbial longevity and activity, ensuring thorough organic matter decomposition.

Elevate Your Turf Care Strategy  
[www.grigg.co](http://www.grigg.co)





# WE HAVE THE EDGE

New Life Turf is the leading licensed supplier of new and improved turf varieties all grown on fumigated soil and customized to meet your specifications.

### Our Turf

TifEagle TifDwarf Tifway 419 TifGrand Tahoma 31  
Diamond Zoysia Palisades Zoysia Cavalier Zoysia

### Our Services

Installation Sprig Planting Greens Renovation










# TUESDAY GENERAL ACTIVITIES

## TUESDAY, NOVEMBER 19, 2024



<b>7 am - 8 pm</b>	<b>Registration</b>	Hall of Fame
<b>7 am - 2 pm</b>	<b>Exhibitor Move-In</b>	Exhibit Hall
<b>7 am</b>	<b>Exhibitors Refreshment Breaks</b>	<ul style="list-style-type: none"> <li>Water Station in luncheon area of trade show floor</li> <li>Coffee and Cream Starbucks, Sheraton 2nd Floor is open 6:30am - 11am</li> <li>Sodas can be purchased on Level 2 of the Convention Center, right off escalator near restrooms</li> </ul>
<b>11:30 am - 12:30 pm</b>	<b>Seminar Luncheon</b>  <b>MENU</b> <b>Carolina BBQ Buffet</b> Southern Creamy Potato Salad Creamy Home-Made Coleslaw Fire Braised Chicken with Carolina Gold BBQ Sauce Creamy Macaroni and Cheese Slider Rolls Seasonal Fruit Cobbler with Fresh Whipped Cream Iced Water and Tea Station	Ballroom DE Lunch is included with two half-day seminars on Tuesday In Partnership with     
<b>1 pm</b>	<b>Turf Bowl Participant Lunch</b>	Ballroom E In Partnership with 
<b>2 - 4 pm</b>	<b>Carolinan GCSA Student Chapter Turf Bowl</b>	Ballroom D In Partnership with 
<b>4 - 4:30 pm</b>	<b>Student Question and Answer with Assistant Superintendents / Job Fair</b>	Immediately following turf bowl Aquatrols booth #1601
<b>4 - 8 pm</b>	<b>Carolinan Night</b>	Trade Show Floor
<b>3:30 - 7 pm</b>	<b>Trade Show Open</b>	Exhibit Hall
<b>7 - 8 pm</b>	<b>Women in Turf</b>	Vereens booth # 2212

# CAROLINAS GCSA STUDENT CHAPTER TURF BOWL

2 - 4 PM • BALLROOM D



You could think of it as a kind of pre-draft combine for future golf course superintendent talent or maybe a reimagining of Jeopardy for turfgrass junkies. Whichever you prefer, the Carolinas GCSA Student Turf Bowl brings the together the best of the next generation and puts them to the test.

The annual quiz for teams of students from turf programs across the region has grown into a showcase event at Conference and Show. Using a fast-paced Q&A format hosted by the always entertaining Bo Barefoot, the Turf Bowl seems to draw a larger crowd every year.

Among those paying close attention are superintendents looking to spot someone they might like to hire. With dozens of students testing their knowledge in a competitive environment, the Turf Bowl offers the chance for unique insight into how next summer's intern might perform under pressure.

And make no mistake, there is pressure. With the fate of your teammates and school pride on the line, it takes some confidence, not just smarts, to come up with an answer and campaign for it in the heat of the moment.

The Carolinas GCSA greatly appreciates the continued support of The Aquatrols Company in helping make this event possible.

In Partnership with



Horry-Georgetown Technical College's Prof. Charles Granger, with 2023 winning team members Will Turpin, Dominiq Jackson, Connor Romanosky and Bryan Matthews, with Associate Prof., James Huntoon



Clemson's 2023 winning team members Will McAlister, Jay Shell, T.G. Boling and Riley Smoak, with Don Garrett, CGCS from The Walker Course at Clemson University



# SEMINAR LINE-UP IN DEPTH

TUESDAY, NOVEMBER 19, 2024 • 8-11:30 am



## 12 Ultimate Weed Control Guide!



**Moderator: Bert McCarty, Ph.D.**  
*Professor of Turfgrass Science  
Clemson University*



**Panelists: Matthew T. Elmore, Ph.D.**  
*Associate Extension Specialist  
Rutgers University*



**J. Scott McElroy, Ph.D.**  
*Professor Weed Science/Turf  
Auburn University*



**Travis W. Gannon, Ph.D.**  
*Associate Professor of Crop Science  
NC State University*



**Fred H. Yelverton, Ph.D.**  
*Emeritus Extension Specialist  
NC State University*

Come participate in a rare, one-of-a-kind panel discussion by the world's top turfgrass weed specialists. Specialists will cover the latest management strategies for the most troublesome weeds in turf such as Poa, goosegrass, nutsedge/kyllinga, Va. buttonweed, doveweed as well as how herbicide resistance is changing the ways the industry should address these. Weed resistance has reached epidemic status and this panel will cover the history of resistance development, how to integrate weed life cycles, environmental factors affecting weed growth and occurrence, plus chemical and cultural control in developing a holistic weed management program. Panelists will also discuss ways to maximize oxadiazon use with the impending acreage use restriction set for 2024. Come with your questions and interact with colleagues on ways to maximize the efficiency of weed control strategies. No boring PowerPoint presentations, rather, panelists and participants interacting to provide solutions to complex issues.



**GCSAA Ed Points: .35**



**PESTICIDE CREDITS**  
SC-3.5 hrs. NC- 3.5 hrs. GA-3 hrs.

## 13 P's of Fertilization: Phosphorus, Phosphite and Why They Do Different Things for You!



**Beth A. Guertal, Ph.D.**  
*Project Director, CEMARCH  
Kansas State University*

There's a whole lot of phosphorus P fertilizer out there to be applied, but what's the difference if it's phosphorous acid? This seminar will sort through it all, differentiating between phosphorus and phosphite, and when one should be applied, and when the other is recommended. We will cover rates of P (do you really need it establish seedings?), soil-test readings and P sources (DAP? MAP? TSP?). The potential environmental effects of too much P will also be discussed. Finally, we will cover phosphites - how they differ from fertilizer P, when you should consider their use, and how they move about the plant.



**GCSAA Ed Points: .35**



**PESTICIDE CREDITS**  
SC-0 hrs. NC-0 hrs. GA-0 hrs.



# 14

## How to Best Utilize Your Assistant for His/Her Growth!



**John "Billy" Bagwell**

*Agronomy Director  
Callawassie Island*



**Chris Neff**

*Consulting Agronomist  
USGA Green Section*

The presentation focuses on the strategies and practices Golf Course Superintendents can employ to support the professional development of their assistants. This session will highlight mentoring techniques, delegation of responsibilities, and opportunities for skill-building, aiming to create a nurturing environment that fosters growth and prepares assistants for future leadership roles. Attendees will gain insights into building a collaborative team dynamic that enhances individual and organizational success.



**GCSAA Ed Points: .35**



**PESTICIDE CREDITS**  
SC-0 hrs. NC-0 hrs. GA-0 hrs.

# 15

## Current Trends in Research & Innovations from USGA - Data Collection



**Cole Thompson, Ph.D.**

*Turfgrass & Environmental Research  
USGA*



**W. Brian Powell, CGCS**

*Deacon Customer Success Agronomist  
USGA*



**Wesley Stewart, M.S.**

*Data Scientist  
USGA*

This seminar will provide updates and conclusions from the latest university research funded through the USGA's Turfgrass Environmental Research Program. New information will be presented on turfgrass breeding efforts, pest control, water conservation, and turfgrass management in golf. We will also discuss new innovations and trends in the industry.



**GCSAA Ed Points: .35**



**PESTICIDE CREDITS**  
SC-0 hrs. NC-0 hrs. GA-0 hrs.

# SEMINAR LINE-UP IN DEPTH

TUESDAY, NOVEMBER 19, 2024 • 8-11:30 am



## 16 Being an Effective Superintendent... It's Not All About Growing Grass



**Dave Dettmer, CGCS**  
*Southeast Regional Field Staff Representative, GCSAA*



**Donald C. Garrett, Jr. CGCS**  
*Golf Course Superintendent  
The Walker Course at Clemson University*



**Jim Huntoon**  
*Associate Professor, Golf & Sports Turf Management  
Horry-Georgetown Technical College*

When you think of a Golf Course Superintendent, you automatically think about grass. However, there is so much more to becoming an effective superintendent. This seminar will teach you the importance of professionalism, advocacy, communication, relationships and social networking to become a more effective superintendent. You will gain a plethora of tips for success to help you to better yourself in your career.



**GCSAA Ed Points: .35**



**PESTICIDE CREDITS**  
SC-0 hrs. NC-0 hrs. GA-0 hrs.

## 17 Getting to the Root of Managing Soilborne Diseases Warm-Season Turfgrass



**Jim Kerns, Ph.D.**  
*Professor and Extension Specialist of Turfgrass Pathology  
NC State University*



**Joseph A. Roberts, Ph.D.**  
*Assistant Professor and Extension Specialist of Turfgrass Pathology  
Clemson University*

Management of turfgrass in the transition zone presents several challenges. Warm season turfgrasses in this area may be more adapted to endure the intense summer heat, but there are numerous pests that are of constant concern for degrading turfgrass playing surfaces. This seminar will focus on those diseases that attack below the turf surface and are often unseen until the root system is often severely degraded. Pathogens that attack roots, stolons and rhizomes can be particularly challenging, but attendees will gain perspective in forecasting these issues in the future and how to spot the early symptoms before it's too late. We will cover the current state of knowledge regarding the cause, epidemiology, and management of mini-ring, take all root rot, spring dead spot, and pythium root rot. We will also discuss new research examining how pathogenic nematodes may be impacting these diseases. For each disease, we will cover the current state of cultural and chemical controls so that attendees can implement these tools in their 2024 programs.



**GCSAA Ed Points: .35**



**PESTICIDE CREDITS**  
SC-3.5 hrs. NC- 3.5 hrs. GA-3 hrs.

# 18 Aging Putting Green, Root Zone & Management of Organic Matter



**Roch E. Gaussoin, Ph.D.**

*Emeritus Professor, Department of Agronomy and Extension Specialist  
University of Nebraska-Lincoln*



**Jim Murphy, Ph.D.**

*Extension Specialist, Department of Plant Biology  
Rutgers University*

The organic matter story, as told repeatedly, continues to evolve. What was, what is and what might be on the horizon will be discussed, focusing on how greens evolve over time and what the turfgrass manager can do to manage organic matter in sand-based root zones. One of the more common practices used to provide optimal playing conditions on putting greens is sand topdressing and cultivation. Beyond playability, the agronomic benefits of topdressing are plentiful. The layer of thatch is often problematic to plant health. We'll focus on strategies proven effective in managing organic matter accumulation on greens. Develop a better understanding of topdressing advantages/pitfalls, minimize surface & play disruption, and evaluate & apply research-based topdressing strategies



**GCSAA Ed Points: .35**



**PESTICIDE CREDITS**  
SC-0 hrs. NC- 0 hrs. GA-3 hrs.

# 19 Ready, Set.....Grow!



**John P. Cunningham, CGCS**

*General Manager and COO  
Grandfather Golf and Country Club*



**Jodie J. Cunningham, SPHR, SHRM-SCP**

*Owner & Talent Optimization Expert  
Optimus Talent Partners*

This session will explore several topics and strategies to help you and those around you develop a career trajectory. We will dive deep into career planning, resume development, effective cover letters, digital portfolios, and interviewing strategies.



**GCSAA Ed Points: .35**



**PESTICIDE CREDITS**  
SC-0 hrs. NC-0 hrs. GA-0 hrs.



# SEMINAR LINE-UP IN DEPTH

TUESDAY, NOVEMBER 19, 2024 • 8-11:30 am

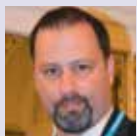


## 20 Aquatic Plant Management: An Introduction to Keeping Your Ponds Free of Unsightly Plants and Algae



**Matthew Cutulle, Ph.D.**

*Assistant Professor of Weed Science,  
Plant and Environmental Sciences  
Clemson University*



**Rob Richardson, Ph.D.**

*Professor and Extension Specialist,  
Aquatic and Non-Cropland Weed  
Science  
NC State University*

Whether ponds serve as visual focal points for your property or an irrigation source, aquatic weeds can interfere with the appearance and use of the waterbody. Using proper management techniques can keep these weeds at bay and allow full use of your water body. This seminar will give superintendents a complete overview of how to manage their aquatic resources including water quality, aquatic plant identification, and integrated best management practices for control of the major aquatic weed problems. Specific instruction on the newest aquatic herbicides, use of aquatic herbicides in irrigation sources, and management of marginal areas will be emphasized. An overview of relevant rules and regulations that apply to the management of aquatic resources will also be covered.



**GCSAA Ed Points: .35**



**PESTICIDE CREDITS**  
SC-3.5 hrs. NC- 3.5 hrs. GA-3 hrs.

## 21 Managing Cool-Season Grasses in Hot Environments!



**Mike D. Richardson, Ph.D.**

*Professor of Horticulture  
University of Arkansas*

Cool-season grasses have many uses in transition-zone environments, but also struggle during our long, hot summers. This seminar will cover some basics about what causes cool-season grasses to suffer, how to select the best cultivars for specific applications, and management practices that can reduce stress due to high temperatures and extended drought.



**GCSAA Ed Points: .35**



**PESTICIDE CREDITS**  
SC-3.5 hrs. NC- 0 hrs. GA-3 hrs.

# SEMINAR LINE-UP IN DEPTH

TUESDAY, NOVEMBER 19, 2024 • 12:30 – 4:00 PM

## 22 Physical and Chemical Soil Properties



**Beth A. Guertal, Ph.D.**  
*Project Director, CEMARCH  
Kansas State University*

Admit it, you missed a LOT of this in soils classes. We all did! So, let's refresh the basics. We'll cover soil pH, cation exchange capacity, bulk density, porosity and all that super-fun stuff. Learn what you can easily change, and what is pretty much a characteristic of your soil. You will also learn about the tests and other resources to help you figure out what kinds of physical and chemical soil properties you have in your soil.



**GCSAA Ed Points: .35**



**PESTICIDE CREDITS**  
SC-0 hrs. NC-0 hrs. GA-0 hrs.

## 23 The Architecture of a Successful Renovation



**Sam Duinick**  
*Director of Business Development  
Duinick Golf*



**Nick Mazzella**  
*Owner, Mazzella Golf Renovations*



**Chris Neff**  
*Consulting Agronomist  
USGA Green Section*



**Nick Roth**  
*Director of Greens and Grounds  
The Tree Farm*



**Tyler J. Rae**  
*Owner/Golf Architect  
Tyler Rae Designs*

This roundtable discussion delves into the essential elements and strategic planning necessary for revitalizing golf courses to meet modern standards and expectations. It will gather industry experts, including golf course architects, superintendent, project manager, agronomist, and construction manager, to explore best practices in redesigning and updating golf course layouts. Topics will include sustainability, aesthetic enhancements, technological integration, and player experience improvements, providing attendees with a comprehensive understanding of what constitutes a successful renovation project.



**GCSAA Ed Points: .35**



**PESTICIDE CREDITS**  
SC-0 hrs. NC-0 hrs. GA-0 hrs.

# SEMINAR LINE-UP IN DEPTH

TUESDAY, NOVEMBER 19, 2024 • 12:30 – 4:00 PM



## 24 Nematodes: Past, Present, and Future Directions for Management of these Elusive Pests!



**David S. McCall, Ph.D.**

*Associate Professor, Turfgrass Pathology  
Virginia Tech*



**Joseph A. Roberts, Ph.D.**

*Assistant Professor and Extension  
Specialist of Turfgrass Pathology  
Clemson University*

Let's face it, whether you manage cool or warm season turfgrass here in the Carolinas, you have either heard or dealt with concerns over nematodes. Concerns of nematodes are growing, particularly in areas that are experiencing longer and hotter growing seasons revealing nematode damage in area in unsuspected areas. Many turfgrass managers experiencing these issues in new areas raise questions of have they been there all along, why is damage just starting to appear, and how can I manage or even prevent the damage from occurring in the future. Attendees of this seminar will gain a thorough understanding of the diversity of nematodes impacting turfgrasses managed throughout the Carolina's. We will cover symptoms of nematode damage, how to sample for different nematodes, how diagnosticians identify various groups, and how management tools can be implemented to circumvent loss of turf. The latest information on cultural and chemical control measures will be discussed for optimal application timing in 2024 programs.



**GCSAA Ed Points: .35**



**PESTICIDE CREDITS**  
SC-3.5 hrs. NC-3.5 hrs. GA-3 hrs.

## 25 Successful Bentgrass Management on Greens and Fairways!



**Jim Murphy, Ph.D.**

*Extension Specialist, Department of  
Plant Biology  
Rutgers University*



**Matthew T. Elmore, Ph.D.**

*Associate Extension Specialist  
Rutgers University*

This seminar will describe the adaptation of bentgrass species to environmental factors including climate, soil, and exposure. Additionally, advances in improved varieties have altered how best to manage bentgrass. Practices such as mowing, irrigation, fertilization, topdressing and cultivation/aeration can influence thatch accumulation, disease severity, playing conditions, and the ability of the turf to compete with weeds including crabgrass, goosegrass, sedges, and annual bluegrass. Cultural and chemical strategies to control weeds in bentgrass will be presented. Additionally, factors that affect the ability of bentgrass to compete with annual bluegrass will be emphasized.



**GCSAA Ed Points: .35**



**PESTICIDE CREDITS**  
SC-3.5 hrs. NC-2 hrs. GA-3 hrs.



# 26 It's About Tines!



**Roch E. Gaussoin, Ph.D.**

*Emeritus Professor, Department of Agronomy and Extension Specialist  
University of Nebraska-Lincoln*

For organic matter management on golf greens, “dilution is the solution” has become the mantra. Straightforward in concept and complex in implementation, topdressing becomes reliant on cultivation to ensure sand is getting into the profile efficiently. Common sense and recent research has indicated that tine choice is key to optimize sand placement into the rootzone. Results of a comprehensive evaluation of tines and dilution impact, green speed, surface firmness and other greens performance criteria will be presented with practical use recommendations.



**GCSAA Ed Points: .35**



**PESTICIDE CREDITS**  
SC-0 hrs. NC-0 hrs. GA-3 hrs.

# 27 The Art of Effective Delegation and Communication



**Jodie J. Cunningham, SPHR, SHRM-SCP**

*Owner & Talent Optimization Expert  
Optimus Talent Partners*

Delegation is one of the most difficult parts of leadership to master. You were promoted because you were good at doing the work. Now, your job is to lead the people who do the work. And that includes delegation. Mastering the art of effective delegation is absolutely critical to both your course and career success.

Attendees will learn:

- What is delegation?
- Why is it important to master?
- What happens when you don't delegate effectively?
- Tips and tools for effective delegation



**GCSAA Ed Points: .35**



**PESTICIDE CREDITS**  
SC-0 hrs. NC-0 hrs. GA-0 hrs.

# SEMINAR LINE-UP IN DEPTH

TUESDAY, NOVEMBER 19, 2024 • 12:30 – 4:00 PM



## 28 Self-Awareness and Relationship Building - A Deep Dive!



**John P. Cunningham, CGCS**  
*General Manager and COO  
Grandfather Golf and Country Club*

Most of us believe that we are self-aware, but in this seminar, we'll take a deep dive into why we need to be more focused on who we are and how we are wired. We'll explore and spend significant time on how each attendee is wired reviewing their behavioral analysis (completed pre-session) and understanding more about the outcomes. Then, we'll focus on the importance of your self-awareness and how it affects your relationships with the team, assistant superintendent, green committee, golf professional, and general manager. No matter how many years you have been "in the business" and how self-aware you think you may be, there is always more to learn about yourself, which makes self-awareness so exciting.



**GCSAA Ed Points: .35**



**PESTICIDE CREDITS**  
SC-0 hrs. NC-0 hrs. GA-0 hrs.

## 29 Wetting Agents: What They Are, What They're Not, and How to Get the Most Out of Them!



**Mike D. Richardson, Ph.D.**  
*Professor of Horticulture  
University of Arkansas*

This presentation will cover wetting agents (aka soil surfactants) on multiple levels. Starting with an overview of the current marketplace, it will discuss different active ingredients and basic wetting agent chemistry. Using recent research, it will address the confusion surrounding marketing terminology such as "penetrant" and "retainer." Finally, it will compare different application strategies for optimizing performance and expanding the benefits of wetting agents.



**GCSAA Ed Points: .35**



**PESTICIDE CREDITS**  
SC-3.5 hrs. NC- 3.5 hrs. GA-3 hrs.

# 30

## Goosegrass, Doveweed, Torpedograss and Other Growing Weed Problems!



**J. Scott McElroy, Ph.D.**  
*Professor, Weed Science/Turf  
 Auburn University*



**Travis W. Gannon, Ph.D.**  
*Associate Professor of Crop Science  
 NC State University*

Goosegrass has become the one of the most problematic weeds in turfgrass. With herbicides resistance and expanded geographic encroachment, options for control are dwindling. Dr. McElroy will discuss goosegrass along with other growing weed issues such as doveweed, chamberbitter, torpedograss, and select sedges to understand the biology of these species and possible control options.



**GCSAA Ed Points: .35**



**PESTICIDE CREDITS**  
 SC-3.5 hrs. NC- 3.5 hrs. GA-3 hrs.

# 31

## Everything You Need to Know About Ultradwarf Bermudagrass!

**Moderator: David Lee**

*Golf Course Superintendent  
 Forest Creek Golf Club, Pinehurst, NC*

**Lance B. Allen**

*Golf Course Superintendent  
 WoodFin Ridge Golf Club, Inman, SC*

**Brad Edens**

*Golf Course Superintendent  
 Walnut Creek Country Club, Goldsboro, NC*

**Jeff R. Mack**

*Golf Course Superintendent  
 Country Club of Landfall, Wilmington, NC*

**Mark W. Mitchell**

*Golf Course Superintendent  
 Secession Golf Club, Beaufort, SC*

This seminar will involve the participants in a full panel discussion and presentation of ultradwarf bermudagrass management of what works and what does not work. Successes and failures will be discussed, and participants will be provided with experience-based suggestions for management of the ultradwarf bermudagrass and their diseases.



**GCSAA Ed Points: .35**



**PESTICIDE CREDITS**  
 SC-3.5 hrs. NC- 3.5 hrs. GA-3 hrs.

# CAROLINAS NIGHT ON THE TRADE SHOW FLOOR



**TUESDAY, NOVEMBER 19 ■ 4 – 8 PM**

**OPEN TO EVERYONE ON THE TRADE SHOW FLOOR**

## **BARS OPEN AT 4 PM**

Tri-State Pump, booth #407

AgStone LLC, booth #2610

(Wine, Beer, & Soda)

Cash bar for liquor will be available as well.

Water coolers will also be placed on the outside perimeter of the trade show floor.

## **FOOD STATIONS OPEN AT 5 PM**

Green Resource, booth #1604

NanoOxygen Systems, booth #1016

## **COMPLIMENTARY DRINK TICKETS**

Available from Tri-State Pump & Control, Inc. and AgStone LLC as well as the 27-hole challenge booths \*designated on the floor layout

*Additional drink tickets may be purchased from the registration desk onsite for \$10 each*

**IN PARTNERSHIP WITH**

 **AGSTONE**

Booth #2610

 **Green Resource**

Booth #1604

 **tsp**  
Est. 1994

Booth #407

 **NanoOxygen**  
SYSTEMS  
OXYGEN DELIVERED.

 **RAPIDWATER**  
TECHNOLOGIES

Booth #1016



# WEDNESDAY EVENTS

## WEDNESDAY, NOVEMBER 20, 2024

### FELLOWSHIP BREAKFAST SPEAKER

#### Willie Pennington

He retired in 2019, but Willie Pennington remains a recognizable face for generations of people in Carolinas golf course maintenance. Over 47 years representing BASF, his booming baritone and big frame made him memorable, as did his ever-buoyant personality. There is also the fact that in an industry that remains overwhelmingly white, Pennington is African American.



At this year's annual Fellowship Breakfast during Conference and Show, he will share some of the lessons and perspectives he gained over that time and how his faith guided him in a world where his heritage set him apart.

Pennington was raised in segregation in rural Alabama and taught to value hard work and dedication. In 1970, he graduated with a degree in chemistry from Tuskegee University where his football play at guard also earned him a place in the university's Athletic Hall of Fame. In 1974, he moved to Charlotte to join BASF. Twenty years later he moved to Raleigh.

For years, he has traveled internationally, often to some of the poorest parts of the world, performing missionary work, always with an acute sense of empathy for those he serves because of his own humble roots. The annual Fellowship Breakfast before the annual business meeting on Wednesday, November 20, is once again presented in partnership with NewLife Turf and Corbin Turf and Ornamental Supply.

### REGISTRATION

**7 am - 2 pm**

*Myrtle Beach Convention Center  
Hall of Fame*

### FELLOWSHIP BREAKFAST

*Complimentary to all registrants but please sign up in advance for food count guarantees.*

**7 - 8 AM**

*Ballroom D*

*In Partnership with*



### Traditional Breakfast Buffet

Market Display of Fresh Seasonal Fruits  
Fresh Baked Biscuits with Butter  
and Assorted Jellies  
Farm Fresh Scrambled Eggs  
Southern Style Grits  
Crisp Applewood Smoked Bacon  
Regular and Decaf Coffee  
Orange Juice  
Iced Water



### General Session Refreshment Break

- Water Stations across outside Ballroom E
- 7:45-8:45 am Coffee across from Ballroom E
- 9 am – 10 am Sodas outside Ballroom E

# EDUCATION SESSION

## WEDNESDAY, NOVEMBER 20, 2024



Wednesday General Session Partner

**Ballroom E • Presiding - Alex Tolbert, Vice President Carolinas GCSA**  
Orangeburg Country Club, Orangeburg SC

GCSAA Ed Points: .30

PESTICIDE CREDITS  
SC-1 hrs. NC-1 hrs. GA-1 hrs.

8 am	<b>Welcome</b>	<b>Pete Gerdon, President Carolinas GCSA</b> Grandfather Golf & Country Club Linville NC
8:05 - 8:20 am	<b>Rounds4Research Update</b>	<b>Daryl P. Ewing, Golf Course Superintendent, Carolina Lake and Indian Land, SC</b>
8:20 - 9:20 am	<b>Project Updates from Grad Students</b>	<b>NC State University Clemson University</b>
9:20 - 10:35 am	<b>Turfgrass Disease Management: Past, Present, and Future</b>	<b>Lee Butler, NC State University Jim Kerns, Ph.D., NC State University David S. McCall, Ph.D., Virginia Tech Joseph A. Roberts, Ph.D., Clemson University</b>
10:35 - 11 am	<b>USGA Southeast Region</b>	<b>Highlights of the 2024 Golf Season</b> Jordan Booth, Ph.D., USGA Southeast Region
11 - 11:15 am	<b>Distinguished Service Award Presentation</b>	<b>Chuck Green, Quixote Club, Sumter SC</b>
11:15 - 11:30 am	<b>Annual Business Meeting</b>	<b>Presiding - Pete Gerdon, President, Carolinas GCSA, Grandfather Golf &amp; Country Club, Linville, NC</b>
11:30 am - 2:30 pm	<b>Trade Show Open</b>	Exhibit Hall
2 pm	<b>27 - Hole Challenge Prize Giveaway</b>	Exhibit Hall Stage Area near John Deere
2:30 - 8 pm	<b>Exhibitor Tear Down</b>	Exhibit Hall
6 pm	<b>Distinguished Service Award Dinner</b>	By Invitation Only Grand Dunes Ocean Club  In Partnership with  



# Win a 5 day fishing trip to Panama!



Day 2: Journey to Playa Chumico

Day 4: Visit nearby towns

Day 1: Arrival

Day 3: Fishing and Exploring

Day 5: Departure



In Partnership with Ecological Improvements





#### Day 1: Arrival

As a guest of The Tuna Coast, expect VIP treatment from the moment you touch down at Panama City Airport. Dedicated transportation will be ready to take you to your hotel. We'll kick off our adventure with a delightful dinner at one of our favorite restaurants in preparation for the next day's travel.

#### Day 2: Journey to Playa Chumico

The following morning, we embark on our journey to Playa Chumico. We'll take a short flight from a small airport in Panama City to Pedasi, where you can explore the area before a brief 30-minute drive to Playa Chumico.

#### Day 3: Fishing and Exploring

Relax and immerse yourself in a day dedicated to fishing at Playa Chumico. Our boats will be fully equipped for our excursion, and for those interested, there's an option for spearfishing. You can look forward to a delectable dinner featuring the catch of the day.

#### Day 4: Visit nearby towns

The second day will offer an abundance of opportunities for fishing, exploration, and embracing Panama's laid-back lifestyle. Consider a visit to the nearby beach town, Playa Venao, where surfing, hiking, delicious restaurants, and a lively evening await.

#### Day 5: Departure

On our final day, we'll return to Panama City by flight. After arriving, take some time to unwind and wander through the historic district before your scheduled departure the following day.





In Partnership with



## 27-HOLE CHALLENGE

The Carolinas GCSA is proud to present the 27-Hole Challenge to superintendents and assistant superintendents from ANY AFFILIATED GCSAA CHAPTER who registers for a FULL CONFERENCE PACKAGE. Complete the 27-Hole Challenge tour of the trade show floor and get to know the industry partners who help make this outstanding event possible.

27-Hole Challenge scorecards will be mailed to those who are pre-registered at the end of October. A replacement card can be picked up at the 27-Hole Challenge Booth #3509 during trade show hours if you do not receive it.

**Grand Prize Partner**  
See Details on Page 37-38



**Grand Prize: 2 Person Trip to Tuna Alley!!**  
**2nd Prize: \$2,000**  
**3rd thru 6th: \$500**  
**7th thru 15th: Choice of assorted prizes**

**Next Generation Prizes:**

**1st Prize: \$1,000**  
**2nd Prize: \$500**  
**3rd and 4th Prize: Choice of assorted prizes**

Winner is responsible for any applicable taxes.

Grand Prize Partner: Ecological Improvement, Booth #2510. Winner will coordinate trip with owner Jack Moran.



## How to Play – NEW FOR 2024 ELIGIBILITY AND PRIZES!!

- 27-Hole Challenge participants must be registered for a FULL CONFERENCE PACKAGE and Class A or B member of ANY affiliated chapter of GCSAA. Same applies for participants in the Next Generation 27-Hole Challenge, must be a Class C member of ANY affiliated GCSAA Chapter and registered for FULL CONFERENCE PACKAGE.
- 27-Hole Challenge scorecards may be picked up at the 27-Hole Challenge booth #3509 (inside John Deere booth) during normal trade show hours.
- The event will consist of 27 exhibiting company booths. A flag will mark each booth and participants must have their scorecard stamped at each of the designated booths.
- 27-Hole Challenge booths will be located at various sites throughout the exhibit area and will be designated on the exhibit hall directory provided on site.
- Score cards must be stamped during normal trade show hours on Tuesday and Wednesday. Scorecards must be turned into the 27-Hole Challenge booth #3509 by 1:30 pm on Wednesday, November 20th.
- All cards completed will all required stamps will be entered into the drawing for prizes.
- Participants must be present at the drawing, beginning 2 pm Wednesday, to be eligible to claim any prizes awarded. If not present, another name will be drawn immediately.

# GENERAL INFORMATION



## Badges and Admittance

Official Carolinas GCSA name badge must be worn at all times at the Myrtle Beach Convention Center.

Name badges will be checked upon entry to:

- Seminars on Monday and Tuesday
- Seminar Luncheons on Monday and Tuesday
- Trade Show Floor on Tuesday and Wednesday
- General Education Session on Wednesday

## Cancellation Policy

Conference and Show cancellation requests must be in writing and received by Monday, November 11, 2024 to receive a refund. A \$25 administrative fee will be charged for all full and/or partial cancellations. After this date, NO refunds will be made. Special refund note: If your credentials have been mailed at the time of your cancellation, you must return them to the Carolinas GCSA before any refund will be issued.

## Credential Mailing

Credential mailing will begin in October 2024. Credentials for registrations received after October 31, 2024, 12 am EST, must be picked up on-site at the registration desk at the Myrtle Beach Convention Center. Exhibitor badges are not mailed and can be picked up onsite at the registration desk.

## Recommended Dress

The dress requirements for all Conference and Show events should either be golf casual or business casual.

- Golf Casual is defined as a nice pair of slacks and a collared or mock neck golf shirt.
- Business Casual is defined as a nice pair of slacks with a collared or mock neck shirt and a blazer or sport coat.
- Under no circumstances should denim jeans or caps be worn at Conference and Show events.



## Registration Options

Early Bird Fee Registration

**Deadline:** September 30, 2024, 12 am EST

Advanced Fee Registration

**Deadline:** October 31, 2024, 12 am EST

Standard Fee Registration

**Deadline:** November 13, 2024, 12 am EST

**AFTER NOVEMBER 13TH**

YOU MUST REGISTER AT THE EVENT

## Complimentary Full Conference Registration

Complimentary registration will be offered to Carolinas GCSA Honorary, AA and Retired members, Educators, and Golf Course Owners. All complimentary registrations should call the office.

## Seminar Selections

Seminar descriptions can be found on pages 14-33. Seminars are NOT included with the full conference package. Class sizes are limited so register early. Trade show pass is NOT included with seminar registration.

## Full Conference Package

Your full conference package includes:

- General Education Session
- Trade Show Pass for Tuesday and Wednesday

## Family Registration

Complimentary registration is offered to spouses/significant others and children of Carolinas GCSA members. Guests will have access to the trade show Tuesday and Wednesday.

## Complimentary Parking

Complimentary parking in the large lot behind the Myrtle Beach Convention Center is made possible with the partnership by Envu, Carolina Fresh Farms, Nufarm, PBI-Gordon Corp. and Regal.

## No Smoking Policy

The MBCC and all official Carolinas GCSA Conference and Show events will be smoke free.

## Alcohol Policy

Alcohol is only allowed from host bars during Caroliona Night event on Tuesday night.

# MEET THE SPEAKERS



## **John "Billy" Bagwell**

Billy Bagwell serves as the Director of Agronomy at the highly awarded Callawassie Island Club in Okatie, SC. Billy graduated from Clemson University with a Bachelor of Science in Turfgrass and started out (after internships at Long Cove and Kiawah Island) as Callawassie's Assistant Superintendent in 2007. Bagwell has led several environmental endeavors such as the island's work to become designated a Certified Audubon Cooperative Sanctuary in 2017 – one of only 23 in South Carolina. "Beyond a residential community we're a wildlife sanctuary. Through his commitment and leadership impact, Bagwell's reputation now precedes him, leading him to become the 48th president of the Carolinas Golf Course Superintendents Association in 2022.



## **Dr. Terri Billeisen**

Terri Billeisen completed her B.S. and M.S. degrees in turfgrass entomology at Purdue University and moved to North Carolina in 2011 to continue research in the field. She completed her Ph.D. and post-doctoral research in turfgrass entomology under the direction of Dr. Rick Brandenburg. She has been an extension associate at NC State University since 2017.



## **Dr. Rick Brandenburg**

Rick Brandenburg, Ph.D., is a William Neal Reynolds Distinguished Professor in the Department of Entomology and Plant Pathology at North Carolina State University. He has conducted research and extension programs associated with turfgrass and crop pest management for over 35 years and for 16 years served as the co-director of the Center for Turfgrass Environmental Research and Education at NC State.



## **Dr. Jordan Booth**

Jordan Booth, Ph.D., is the Southeast Region Agronomist with the USGA. He received his M.S. in Plant Pathology from Virginia Tech University under the direction of Dr. David McCall. He earned his B.S. degree in Turfgrass Management at Clemson University. Jordan earned his Ph.D. at Virginia Tech. in Plant and Environmental Sciences with research focusing on warm season putting green management. Jordan's tenure at Willow Oaks Country Club in Richmond, Virginia, as an assistant superintendent and superintendent from 2008- 2018 provided him with extensive hands-on experience in all facets of golf course management.



## **Lee Butler**

Lee manages the Turf Diagnostics Lab while remaining active in the turf pathology field research program. This allows him to work with turfgrass managers to develop effective disease management plans based on his knowledge of current disease activity and observations made in fungicide efficacy trials. After receiving his B.S. in Turfgrass Management from NC State, Lee worked in the golf course and landscape management industries before returning to NC State to pursue a M.S. in Plant Pathology. During his graduate studies, Lee developed effective control recommendations for spring dead spot control in bermudagrass turf. In addition to speaking at various conferences and meetings across the United States, Lee gives guest lectures in the College of Agriculture and Life Sciences and in the College of Natural Resources at NC State University.



## **Jodie J. Cunningham, SPHR, SHRM-SCP**

With her unique background in high-end luxury hospitality, private golf and country clubs, and professional sports, she brings a wealth of knowledge as a trusted human capital advisor. Her goal is to provide analysis and consulting that effectively balances the needs of the organization with the talent it currently employs.



## **John P. Cunningham, CGCS**

John Cunningham, CGCS is currently the General Manager/COO at Grandfather Golf and Country Club in Linville, NC. Located in the Blue Ridge Mountains, the Club boasts the #2 ranked course in North Carolina. He received his degree in agronomy from Valencia College in Orlando, FL and has been a Certified Golf Course Superintendent since 2003.



## **Dr. Matthew Cutulle**

Matthew Cutulle, Ph.D., is an assistant professor of weed science at Clemson University in the Department of Plant and Environmental Sciences. He is responsible for research and extension weed management projects in vegetables, small fruits, aquatics, and roadside vegetation management. He received his Ph.D. from the Department of Plant Pathology, Physiology and Weed Science at Virginia Tech University, an MS in Plant Science from the University of Tennessee and a BS in Biology at Salisbury University.



# MEET THE SPEAKERS



## **Dave Dettmer, CGCS**

Dave Dettmer, CGCS is the Southeast Regional Field Staff Representative for GCSAA. A 34-year member of GCSAA, Dettmer became a certified golf course superintendent (CGCS) in 1996. He is a current member of the Carolinas Golf Course Superintendents Association and is a past member and served on the board of the Heart of America Golf Course Superintendents Association. Dettmer holds a bachelor's degree in horticulture, agriculture science from the University of Nebraska-Lincoln.



## **Dr. Matthew Elmore**

Matt Elmore, Ph.D., joined the Rutgers faculty on November 1 as the new weed science extension specialist in turfgrass, landscapes, pastures and forages. Matt earned his B.S. in Turfgrass Science from Penn State University before moving south and earning an M.S. and Ph.D. from the University of Tennessee with a focus in turfgrass weed control. Prior to joining Rutgers, Matt was a Turfgrass Extension Specialist for Texas A&M AgriLife in Dallas, TX where his research efforts explored new strategies to control problematic weeds and reduce irrigation inputs in turfgrass.



## **Dr. Travis W. Gannon**

Travis Gannon, Ph.D., is an Associate Professor of Turfgrass Science at North Carolina State University specializing in weed management and pesticide environmental fate and behavior. He obtained his B.S., M.S. and Ph.D. from NC State University in the Department of Crop and Soil Sciences. Dr. Gannon's research program focuses on understanding various pests and optimizing pesticide programs for sustainable turfgrass management. Dr. Gannon currently advises five graduate students investigating various aspects of pest management and pesticide environmental fate and behavior and is actively involved in Weed Science Society of America, Southern Weed Science Society, GCSAA and Sports Turf Managers Association.



## **Don Garrett, CGCS**

Don Garrett, CGCS, is a 42 year veteran of the Golf Course Maintenance Industry. He has been the superintendent at the Walker Course at Clemson University in Clemson, SC for the past 25 years and previously worked at Kiawah Island Golf Resort in Charleston SC, and Dataw Island Club in Beaufort SC. Don has been a member of the Golf Course Superintendents Association of America since 1987 and earned the designation of Certified Golf Course Superintendent in 1995. He is a past president of the Carolinas GCSA and currently serves on their Board of Directors. Don is a 1985 graduate of Clemson University and

teaches, advises and employs students in the University's Turfgrass program



## **Dr. Roch E. Gaussoin**

Roch Gaussoin, Ph.D., is an Emeritus Professor of Agronomy and Extension Specialist at the University of Nebraska-Lincoln. He is a native New Mexican and an alumnus of New Mexico State University, earning his Bachelor's in Agronomy in 1980 and Master's in 1984. His Ph.D. was completed at Michigan State University in Turfgrass Science in 1988. Gaussoin has conducted academic research for more than 40 years. He is a frequently invited speaker to conferences nationally and internationally. Gaussoin has received the Distinguished Service Award from the Nebraska Turfgrass Association, the Exceptional Service Award from the Nebraska Golf Course Superintendents Association and the GCSAA Col. John Morley Distinguished Service Award. In 2023, he received the USGA Green Section Award. He retired from the University of Nebraska in October of 2024 and moved to Advance, NC to be closer to family.



## **Jim Huntoon**

Jim Huntoon is an Associate Professor of Golf and Sports Turf Management at Horry-Georgetown Technical College. He started this new role this year after 13 years as golf course superintendent at Heritage Club, in Pawleys Island, SC. Before that he was assistant superintendent at Caledonia Golf and Fish Club also in Pawleys Island, SC for 11 years. He also has held positions for Century Golf on transitional teams between superintendents at clubs in the Carolinas. Jim has a BS in Community and Regional Planning from Iowa State University, Ames, IA and an AS in Golf Course Management from Horry-Georgetown Technical College, Conway, SC. He loves family, friends and everything about golf.



## **Dr. Jim Kerns**

Jim Kerns, Ph.D., is Professor and Extension Specialist of Turfgrass Pathology at NC State University. His program focuses on the etiology, epidemiology, and management of Turfgrass diseases of both warm and cool-season grasses. His program actively researches how fungicides move in the root zone after post-application irrigation, take-all root rot etiology and management and Pythium root rot management. Each year his program actively researches how fungicides move in the root zone after post-application irrigation, take-all root rot etiology and management and Pythium root rot management. Each year his program conducts 50-70 different fungicide efficacy trials and examines over 400 samples for disease in the Turfgrass Diagnostic Lab.



# MEET THE SPEAKERS



## **Dr. J. Scott McElroy**

Scott McElroy, Ph.D., is a Professor in the Department of Crop, Soil, and Environmental Sciences in the College of Agriculture at Auburn University. He has authored over 100 scientific publications in the field of

weed science, primarily focusing on herbicide resistance evolution and herbicide efficacy in amenity landscapes such as lawn, parks, athletic fields, and golf courses. His research also focuses on herbicide resistance evolution in all herbicides use areas, including all major row-crops, pastures, non-crop or industrial areas, vegetation management, or amenity landscapes.



## **Dr. David S. McCall**

David McCall, Ph.D., is an Associate Professor and Extension Specialist of Turfgrass Pathology and Precision Management in Virginia Tech's School of Plant and Environmental Sciences. His lab

currently focuses on mapping turfgrass pests for targeted management and an improved understanding of epidemics, integrated management of diseases and nematodes affecting turfgrasses, and understanding the impact of diseases and other disorders on field playability.



## **Dr. Bert McCarty**

Bert McCarty, Ph.D., is a Professor of Horticulture specializing in turfgrass science and management at Clemson University in Clemson, South Carolina. Previously, he held a similar position at the University of Florida.

He has published numerous articles dealing with all phases of turfgrass management and is an oft requested speaker. He is currently authors or co-authors 11 books, is a co-author for the GCSAA seminars, Weed Control, Advanced Weed Management, Advanced Management of Bermudagrass Golf Greens, and Advanced Management of Bentgrass Golf Greens and is active in a number of professional societies.



## **Dr. Grady L. Miller**

Grady Miller, Ph.D., is the Bayer Environmental Science Distinguished Professor and Extension Specialist at North Carolina State University. His university appointment is 50% extension, 25%

research, and 25% teaching. In his extension duties, he works closely with the sod, sports turf, utility turf, and golf course industry to address issues and find solutions to common turf problems. In his career he has taught over 70 university course sections in subjects related to turfgrass culture, golf & sports turf management, and research methodology. His research activities have been related primarily to turfgrass nutrition and water issues, cultivar evaluation, and general turfgrass culture.



## **Dr. Jim Murphy**

Jim Murphy, Ph.D., is the Extension Specialist in Turfgrass Management at Rutgers University. He conducts extension and research programs related to identifying best management practices for turfgrasses grown

in the metropolitan region around New Jersey. His work often focuses on developing a better understanding of turfgrass response to soil-related stresses. He is internationally recognized as an authority on best management practices that enhance the stress tolerance, persistence, and environmental benefits of cool-season turf.



## **Chris Neff**

Chirs Neff is the USGA agronomist in the Eastern Region of the United States. He works closely with courses in the Southeast, including the Carolinas and northern Florida. He has more than three decades

of working experience on a golf course. He served nine years as the director of greens and grounds at Wexford in Hilton Head, South Carolina. Before Wexford, he worked as a superintendent at Timuquana Country Club in Jacksonville, FL and as an assistant superintendent at TPC SawGrass. PonteVerde, FL. He graduated from the University of Florida in 1996 with a degree in environmental horticulture.



## **Brian Powell, CGCS**

Brian Powell, CGCS is the Deacon Customer Success Agronomist at the United States Golf Association (USGA), he provides agronomic guidance and support to golf courses across the country, helping them achieve optimal

playing conditions and environmental sustainability. Brian has over 27 years of experience in the golf industry and holds the Certified Golf Course Superintendent (CGCS) credential, the highest recognition for golf course management professionals.



## **Dr. Rob Richardson**

Rob Richardson, Ph.D., is a Professor and Extension Specialist at North Carolina State University. His primary appointment focuses on research and extension related to aquatic plant management. Rob has many years of

experience in aquatic plant management and advises aquatic managers across the US as well as internationally. He is a Past President of the Aquatic Plant Management Society and Past Editor of the Journal of Aquatic Plant Management. He currently serves as a Board of Directors Member for the Weed Science Society of America and serves as a subject matter expert to US EPA on aquatic plant management.

# MEET THE SPEAKERS



## Dr. Mike D. Richardson

Mike Richardson, Ph.D., is professor of horticulture at the University of Arkansas. He earned a B.S. degree from Louisiana Tech University, an M.S. degree at Louisiana State University and his Ph.D. at the University of

Georgia. Richardson's research focuses on cultural practices that impact cool and warm-season turfgrass production in the transition zone and he has been actively involved with research to screen and develop new turfgrass for a wide range of turfgrass environments.



## Dr. Joseph A. Roberts

Joe Roberts, Ph.D., is an Assistant Professor and Extension Specialist in Turfgrass Pathology and Nematology at Clemson University. He joined the Department of Plant and Environmental Sciences in fall of

2019. Current projects in his lab are aimed at understanding microbial relationships across turfgrass systems in an effort to improve turfgrass health. His research and extension programming focuses on plant pathogen interactions and cultural management tools that limit fungal, nematode, and bacterial pathogens of amenity turfgrasses.



## Wesley Stewart

Wesley Stewart has a Master of Science in Analytics from NC State University. February 2023, he joined the USGA as a Data Scientist. His work likely involves crunching numbers, analyzing golf-related data, and

helping the USGA make informed decisions to enhance the game of golf.



## Dr. Cole Thompson

Cole Thompson, Ph.D., oversees the USGA's turfgrass and environmental research initiatives to improve sustainability and advance turfgrass science principles that enhance management practices for golf

courses. With input from a volunteer committee, university and industry scientists, Cole determines short- and long-term research priorities, solicits and evaluates research proposals, and coordinates with USGA-supported scientists to monitor the progress of current research. Cole earned bachelor's, master's and Ph.D. degrees from Kansas State University. He was a USGA Green Section intern and worked as an assistant golf course superintendent before entering graduate school. Before joining the USGA in 2018, Cole held faculty positions at the University of Nebraska-Lincoln and at Cal Poly-San Luis Obispo.



## Dr. Fred H. Yelverton

Fred Yelverton, Ph.D., has been a faculty member at North Carolina State University for 36 years. Since 1995, he has been a professor of turfgrass science in the Crop Science department at NCSU. His specialties

include turfgrass weed management, turfgrass management, plant growth regulators, and weed biology and ecology. His speaking engagements have taken him to 48 states and 25 countries on six continents. He has taught seminars at CGCSA and GCSAA every year since 1995.



## Dr. Qiyu Zhou

Qiyu Zhou, Ph.D., an assistant professor of turfgrass management at North Carolina State University holding 60% teaching and 40% research. She received her Ph.D. at University of Wisconsin-Madison with Dr.

Doug Soldat in 2021, and studied turfgrass management and developed machine learning models for precision application of nitrogen to golf course green. She conducted post-doctoral work with Dr. Pawel Petelewicz studying precision weed control in turfgrass at University of Florida.



# PESTICIDE CREDITS AND GCSAA EDUCATION POINTS

	ID #	Seminar	Instructor	SC	NC	GA	GCSAA Ed.Points.
Monday Morning 8:00-11:30 am	1	Advanced Management of Ultradwarf Bermudagrass Golf Greens	Bert McCarty, Ph.D. Joe A. Roberts, Ph.D.	3.5	2.0	3	.35
	2	Data Driven Aeration	Jordan Booth, Ph.D., Chris Neff, USGA	0	0	0	.35
	3	How to Stay Cool when Cool-Season Putting Greens Decline	Lee Butler, Dave McCall, Ph.D.	3.5	3.5	3	.35
	4	Fertilizers and Technology	Grady Miller, Ph.D., Qiyu Zhou, Ph.D.	0	0	0	.35
	5	You Pick the Pest: Turf Insect Management	Terri Billeisen, Ph.D.	3.5	3.5	3	.35
	6	Spray Masters: Making the Most Out of All You Apply	Travis Gannon, Ph.D.	3.5	3.5	3	.35
Monday Afternoon 12:30-4:00 pm	7	Making Herbicides Work and Why They Sometimes Fail?	Travis Gannon, Ph.D. Bert McCarty, Ph.D.	3.5	3.5	3	.35
	8	Autonomous Mower and Aerial Drones - Current Technology and Future Applications	Scott McElroy, Ph.D. Dave McCall, Ph.D.	0	0	0	.35
	9	Troubleshooting and Diagnosing Turf Issues!	Lee Butler, Jim Kerns, Ph.D.	3.5	3.5	3	.35
	10	Advanced Weed Management for Cool-Season Turfgrasses	Matt Elmore, Ph.D. Fred Yelverton, Ph.D.	3.5	3.5	3	.35
	11	Cool Season Turfgrass Insects with Emphasis on Annual Bluegrass Weevil	Terri Billeisen, Ph.D. Rick Brandenburg, Ph.D., Gram Grant	3.5	3.5	3	.35
Tuesday Morning 8:00-11:30 am	12	Ultimate Weed Control Guide - Panel	Moderator : Bert McCarty, Ph.D., Matthew T. Elmore, Ph.D., J. Scott McElroy, Ph.D., Travis W. Gannon, Ph.D., Fred H. Yelverton, Ph.D.	3.5	3.5	3	.35
	13	P's of Fertilization	Beth Guertal, Ph.D.	0	0	0	.35
	14	How to Best Utilize Your Assistant for His/Her Growth	Billy Bagwell, Chris Neff	0	0	0	.35
	15	Current Trends in Research and Innovation from the USGA	Cole Thompson, Ph.D., Brian Powell, CGCS, Wesley Stewart, M.S.	3.5	3.5	3	.35
	16	Being an Effective Superintendent....It's Not All About Growing Grass	Dave Dettmer, CGCS Donald C. Garrett, Jr. CGCS Jim Huntoon,	0	0	0	.35
	17	Getting to the Root of Soilborne Diseases - Warm Season Turfgrasses	Jim Kerns, Ph.D. Joe Roberts, Ph.D.	3.5	3.5	3	.35
	18	Aging Putting Green, Root Zone & Management of Organic Matter	Roch Gaussoin, Ph.D. Jim Murphy, Ph.D.	0	0	3	.35
	19	Ready, Set .....Grow!	John Cunningham, CGCS Jodie Cunningham, SPHR, SHRM-SCP	0	0	0	.35
	20	Aquatic Plant Management: Introduction to Keeping Your Ponds Free of Unsightly Plants and Algae *	Matthew Cutulle, Ph.D. Rob Richardson, Ph.D.	3.5	3.5	3	.35
	21	Managing Cool-Season Grasses in Hot Environments	Mike Richardson, Ph.D.	3.5	3.5	3	.35
Tuesday Afternoon 12:30-4 pm	22	Physical and Chemical Soil Properties	Beth Guertal, Ph.D.	0	0	0	.35
	23	The Architecture of Successful Renovation	Nick Mazzela, Chris Neff Nick Roth, Tyler Rae, Sam Duinick	0	0	0	.35
	24	Nematodes: Past, Present, and Future Directions for Management of these Elusive Pests	Dave McCall, Ph.D. Joe Roberts, Ph.D.	3.5	3.5	3	.35
	25	Successful Bentgrass Management on Greens and Fairways	Jim Murphy, Ph.D. Matt Elmore, Ph.D.	3.5	2.0	3	.35
	26	It's About Tines!	Roch Gaussoin, Ph.D.	0	0	3	.35
	27	The Art of Effective Delegation and Communication	Jodie Cunningham, SPHR, SHRM-SCP	0	0	0	.35
	28	Self-Awareness and Relationship Building - A Deep Dive	John Cunningham, CGCS	0	0	0	.35
	29	Wetting Agents: What They Are, What They're Not, and How to Get the Most Out of Them	Mike Richardson, Ph.D.	3.5	3.5	3	.35
	30	Goosegrass, Doveweed, Torpedograss and Other Growing Weed Problems!	Scott McElroy, Ph.D. Travis Gannon, Ph.D.	3.5	3.5	3	.35
	31	Everything You Need to Know About Ultradwarf Bermudagrass!	Moderator: David Lee Lance Allen, Brad Edens Jeff Mack, Mark Mitchell	3.5	3.5	3	.35
	General Education Session	<i>Pesticide credits applied for</i>	1	1	1	.30	

\*Aquatic Credits

\*Credits pending

# CAROLINAS GCSA CONFERENCE AND TRADE SHOW NOVEMBER 18-20, 2024

Register online at [www.carolinascsa.org](http://www.carolinascsa.org) Registration will open at noon on Tuesday, September 17

■ REGISTRATION OPTIONS						
<b>EARLY BIRD FEE REGISTRATION Deadline:</b> September 30, 2024 12 am EST <b>ADVANCED FEE REGISTRATION Deadline:</b> October 31, 2024 12 am EST <b>STANDARD FEE REGISTRATION Deadline:</b> November 13, 2024 12 am EST <b>AFTER NOVEMBER 13TH YOU MUST REGISTER AT THE EVENT</b>						
	Early Bird Fee Prior to Sept 30		Advanced Fee Oct 1-31		Standard Fee After Oct 31	
	Member	Non-Mem.	Member	Non-Mem.	Member	Non-Mem.
<b>Full Conference Package</b>	185	215	200	230	225	255
<i>(Package includes General Education Session, Trade Show, Excludes Seminars)</i>						
SUNDAY						
Assistant Superintendent Reception	0	0	0	0	0	0
MONDAY						
■ SEMINARS SELECTIONS See page 45						
	Member	Non-Mem.	Member	Non-Mem.	Member	Non-Mem.
Mon. (8-11:30)	70	100	85	115	110	140
Mon. (12:30-4:00)	70	100	85	115	110	140
Medal Play	115	145	130	160	155	185
Senior Medal Play (Over 50)	115	145	130	160	155	185
Four Ball	115	145	130	160	155	185
Captain's Choice	115	145	130	160	155	185
Sporting Clay	75	105	100	130	115	145
TUESDAY						
■ SEMINARS SELECTIONS See page 45						
	Member	Non-Mem.	Member	Non-Mem.	Member	Non-Mem.
Tues. (8-11:30)	70	100	85	115	110	140
Tues. (12:30-4:00)	70	100	85	115	110	140
Trade Show Pass (T & W)	95	125	110	140	135	165
WEDNESDAY						
Fellowship Breakfast	0	0	0	0	0	0



# 2024 SUPERINTENDENT IMAGE CAMPAIGN



The Carolinas GCSA greatly appreciates the support of the following companies in promoting awareness and appreciation of the role of golf course superintendents.

## GOLD CLUB

### Ameriturf

Aaron Bensen, *Account Consultant*  
PO Box 219 • Waxahachie, TX 75168  
Phone (972) 483-1812  
abensen@ameriturf.com

### Arboguard Tree Specialists

Barry Gemberling  
*Senior Corporate Arborist - The Carolinas*  
P. O. Box 26767 • Charlotte, NC 28221  
Phone (704) 578-5662  
bgemberling@arboguard.com

### Coastal Floratine, Inc.

Jeffrey A. Fitcher, *President*  
P. O. Box 30267  
Myrtle Beach, SC 29588  
Phone (843) 215-6652  
coastalfloratine@gmail.com

### CR Lutzke Golf

CT Shaw, *President*  
524 Kingsworth Lane SE • Leland, NC 28451  
Phone (910) 664-0145  
ct@crlutzke.com

### East Coast Turf Solutions, LLC

Matt Spatara, *President*  
8097 Sierra Oaks Blvd.  
Jacksonville, FL 32219  
Phone (904) 615-0288  
matt@eastcoastturf.net

### FMC

Chris Pearson  
*Key Customer Manager - Southeast Region*  
303 Cherry Laurel Drive  
Clayton, NC 27527  
Phone (919) 795-2649  
chris.pearson@fmc.com

### Green Resource

Jonathan B. Annas, *Executive Director*  
5204 Highgreen Court  
Colfax, NC 27235  
Phone (336) 855-6363  
jannas@green-resource.com  
Robert G. Herring  
*Director, Sales & Marketing*  
P O Box 429 • Colfax, NC 27235  
Phone (336) 215-5368  
rherring@green-resource.com

### J.K. Morro, Inc.

Thomas P. Porter, *Owner*  
124 Palos Verde Drive  
Mooresville, NC 28117  
Phone (704) 928-9839  
tporter@jkmorro.com

### Nufarm Americas, Inc.

Gregory J. Roman, *Regional Sales Manager*  
126 Southwold Drive • Cary, NC 27519  
Phone (919) 368-0364  
greg.roman@nufarm.com

### Pumps, Motors & Control, Inc.

Dale Bowman, *President*  
5727 Luce Street • Houston, TX 77087  
Phone (832) 487-9463  
dale@pmc-service.com

### Revels Turf and Tractor

Anthony Revels, *CEO*  
2217 North Main Street  
Fuquay-Varina, NC 27526  
Phone (919) 552-5697  
anthony@revelstractor.com

### RNA Turf

Rex C. Davis, *President*  
PO Box 1797 • Indian Trail, NC 28079  
Phone (704) 222-5600  
rdavis@rnaturf.com

### SiteOne Landscape Supply

Torrey M. Boman, *Golf Sales Rep*  
8925 Midway West Rd  
Raleigh, NC 27617  
Phone (919) 625-1058  
tboman@siteone.com

### Smith Turf & Irrigation

Anna-Lindsay Yarbrough,  
*President & COO*  
P.O. Box 669388 • Charlotte, NC 28266  
Phone (704) 909-3312  
anna-lindsay.yarbrough@smithturf.com

### Southern Ag

Andrew L. Wampler, *Sales Representative*  
P O Box 429 • Hendersonville, NC 28793  
Phone (828) 674-2594  
andrew.wampler@southernag.com

### Syngenta

Ben Peters  
*Territory Manager, Professional Solutions*  
Phone (919) 214-2054  
ben.peters@syngenta.com  
Madelyn Tappan  
*Territory Manager, Professional Solutions*  
Phone (302) 725-8306  
madelyn.tappan@syngenta.com  
Danny Jones  
*Territory Manager, Professional Solutions*  
Phone (770) 329-8686  
danny.jones@syngenta.com  
Matt Drayton  
*Territory Manager, Professional Solutions*  
Phone (804) 912-0825  
matthew.drayton@syngenta.com

### The CartPath Company

Mark T. Rownd  
*President*  
2146 Roswell Road, St. 108-330  
Marietta, GA 30062  
Phone (770) 330-7380  
mark@thecartpathco.com

### Triangle Turf & Ornamental

Terry J. Kallam  
*Division Manager*  
455 US 70 East, Suite 120  
Garner, NC 27529  
Phone (919) 322-1093  
tjkallam@trianglecc.com

### Tri-State Pump & Control, Inc.

Tripp Cobb, *President*  
1162 Chastain Road  
Liberty, SC 29657  
Phone (864) 843-8100  
tcobb@tspumps.com

## SILVER CLUB

### BASF Corp.

Scott Waltz  
*Areas Sales Manager NC and SC*  
5104 Winddance Place  
Holly Springs, NC 27540  
Phone (919) 279-3117  
scott.waltz@basf.com

### Southern States Cooperative, Inc.

Jeff Johnson, *Sales Rep.*  
Scott Turner, *Sales Rep.*  
4230 Fox Road  
Lenoir, NC 28645  
Phone (828) 499-3641  
jeff.johnson@sscoop.com  
scott.turner@sscoop.com

### The Aquatrols Company

Chris Vincent, *CGCS, District Manager*  
205 Bellewood Drive  
Easley, SC 29640  
Phone (919) 901-7348  
cvincent@aquatrols.com

### The Mazzella Partnership, LLC

Nick Mazzella, *President*  
400 Landau Road  
Waxhaw, NC 28173  
Phone (704) 650-4859  
nick@mazzellapartnership.com

# Check Out All That JRM, Inc. Has to Offer

We aren't just tines and bedknives anymore!



\*Available in NC, SC, FL, TN, VA, MD & DC



Check out JRM's newly designed  
 website at [www.jrmonline.com](http://www.jrmonline.com)

888-576-7007



# CONNECTIVITY THAT HELPS YOU HIT THE SWEET SPOT EVERY TIME



Manage equipment and crews on your course even when you're offsite with John Deere OnLink Golf Course Management Solutions. Learn how our technology and equipment can take your game to the next level at [BeardEquipment.com](http://BeardEquipment.com) or [RevelsTractor.com](http://RevelsTractor.com).



**BEARD**  
EQUIPMENT CO.

